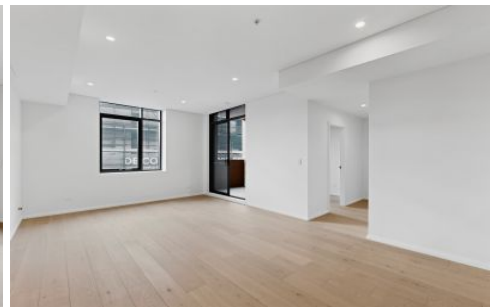
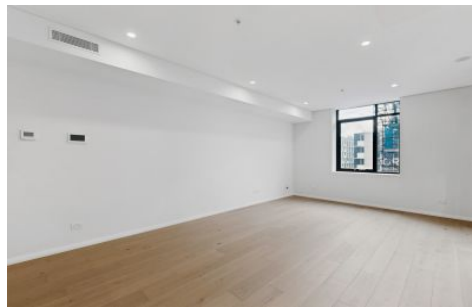
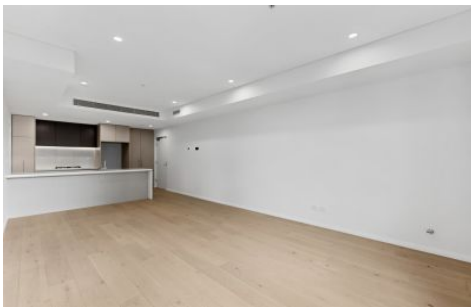


VILLAGE PROPERTY



623/1B Conferta Avenue Tallawong NSW

2  2  1 

"TALLAWONG VILLAGE"

Available Now

Inspection access via Glyceria Lane

Live the life you always imagined at "Tallawong Village", a beautifully curated modern great value 2 bedroom apartment with secure parking.

Only a 2-minute walk to the new Tallawong Metro Station, with trains every 4 minutes, Tallawong Village is poised to take you wherever you need to go but gives you a thousand reasons to stay.

[For full version visit the website](https://www.villageproperty.com.au)

Type : Apartment

Price : \$730 Per Week

View : <https://www.villageproperty.com.au/lease/nsw/western-sydney/tallawong/residential/apartment/8703043>



Melanie Brown
1300 62 44 00

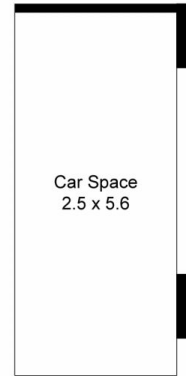
<https://www.villageproperty.com.au>

Unit 623, 1B Conferta Avenue, Tallawong

2 Bed 2 Bath 1 Car



FLOOR PLAN



(Not In Position)

CAR SPACE



(Not In Position)

CAGE

Internal : 84m²
External : 29m²



VILLAGE PROPERTY

All information contained herein is gathered by Little Hinges. Whilst the scanning technology is highly reliable, we cannot guarantee its accuracy and interested parties should rely on their own enquiries.