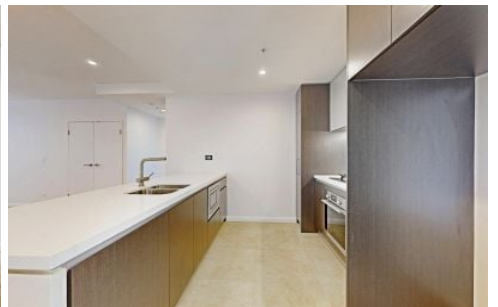
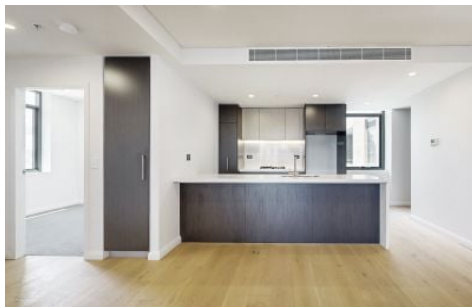


VILLAGE PROPERTY



119/5C Glyceria Lane Tallawong NSW

2  2  1 

"TALLAWONG VILLAGE"

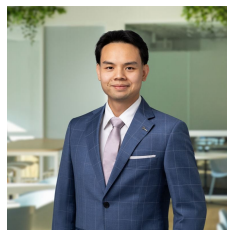
Live the life you always imagined at "Tallawong Village", a beautifully curated new and great value 2 bedroom apartment with secure parking.

Only a 2-minute walk to the new Tallawong Metro Station, with trains every 4 minutes, Tallawong Village is poised to take you wherever you need to go but gives you a thousand reasons to stay.

- New two bedroom, two bathroom home with parking.
- Beautiful natural light in all rooms
- Spacious bedrooms with built-in wardrobes
- Beautifully crafted interiors featuring luxurious finishes

[For full version visit the website](https://www.villageproperty.com.au/lease/nsw/western-sydney/tallawong/residential/apartment/8700535)

Type : Apartment
Price : \$720 Per Week
View : <https://www.villageproperty.com.au/lease/nsw/western-sydney/tallawong/residential/apartment/8700535>



David Ngo
1300 20 55 69

<https://www.villageproperty.com.au>

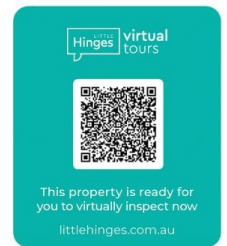
Unit 119, 5C Glyceria Lane, Tallawong



2 Bed 1 Bath 1 Car



Internal : 74m²
External : 10m²



CAR SPACE

FLOOR PLAN

VILLAGE PROPERTY

All information contained herein is gathered by Little Hinges. Whilst the scanning technology is highly reliable, we cannot guarantee its accuracy and interested parties should rely on their own enquiries.