

# VILLAGE PROPERTY



**205/49-53 Regent Street Chippendale NSW**

1  1 

Available from 25th May -

Perfectly positioned at the quiet rear of the sought-after Regent Hall development, this elegantly appointed one-bedroom apartment combines light, space and exceptional convenience in one of Sydney's dynamic city-fringe pockets.

Moments from Central Station, UTS, Sydney University, Central Park Mall and the vibrant Kensington Street dining precinct, it offers the ultimate blend of lifestyle and accessibility-ideal for your new Sydney home.

Residents also enjoy access to newly refurbished common areas, including the gym, BBQ courtyard and upgraded

**Type** : Apartment

**Price** : \$725 per week

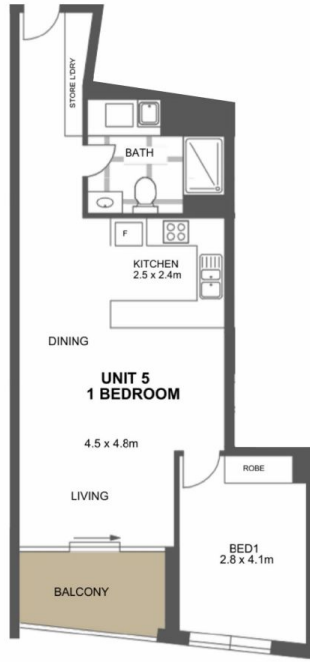
**View** : <https://www.villageproperty.com.au/lease/nsw/sydney-city/chippendale/residential/apartment/8698936>



**Zhuoqun (Kate) Zhang**  
1300 62 44 00

[For full version visit the website](https://www.villageproperty.com.au)

<https://www.villageproperty.com.au>



105, 205, 305, 405/53 Regent Street, Chippendale

DISCLAIMER: PLANS SHOWN ARE FOR PRESENTATION PURPOSES AND ARE NOT PART OF ANY LEGAL DOCUMENT. ALL MEASUREMENTS AND FIGURES ARE APPROXIMATE.