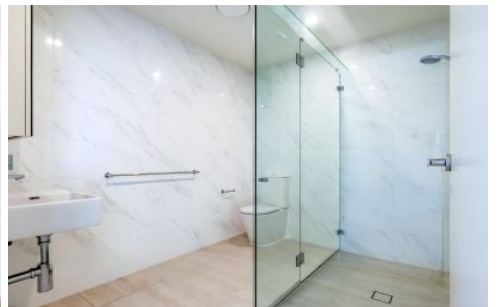


VILLAGE PROPERTY



38/213 Princes Highway Arncliffe NSW

1 1 1

Entrance via Building A

Positioned on the seventh floor and expertly crafted, this sun-drenched apartment delivers an exceptional lifestyle offering. Free-flowing living space extend seamlessly to a private balcony, creating the perfect setting for entertaining or relaxed year-round open-air living.

The thoughtfully designed layout features a generously proportioned bedroom and stylish bathroom, enhanced by contemporary finishes throughout.

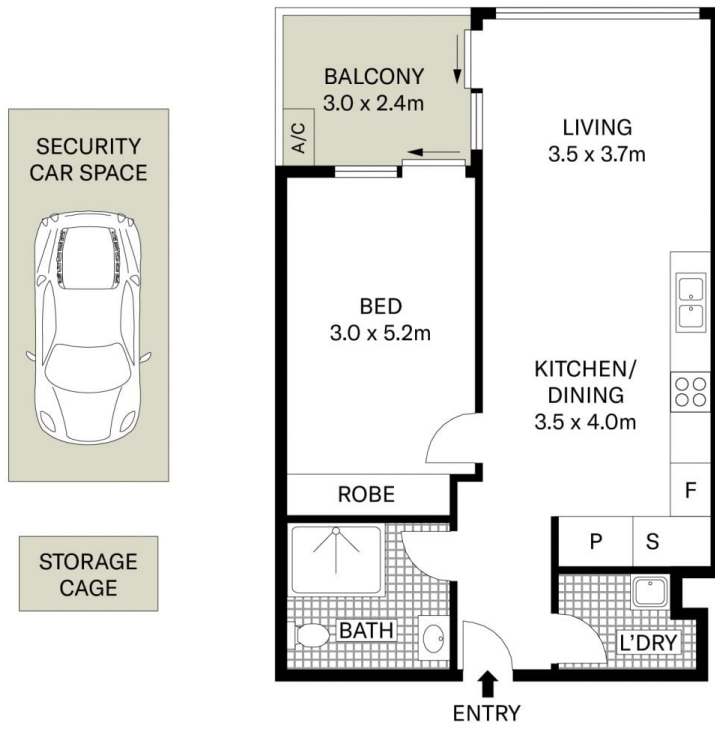
Enjoying a highly sought-after location, the residence is just footsteps from trains, shops, cafés, and popular dining options. Set on the cusp of the vibrant Inner West and only

[For full version visit the website](https://www.villageproperty.com.au)

Type : Apartment
Price : \$600,000 - \$620,000
Land Size : 81 sqm
View : <https://www.villageproperty.com.au/sale/nsw/st-george/arncliffe/residential/apartment/8697250>



Tyler Taylor
1300 62 44 00



All information contained herein is gathered from sources we believe to be reliable. We cannot however guarantee its accuracy and parties should and rely on their own requirements.



38/213 Princes Highway, Arncliffe

VILLAGE
PROPERTY