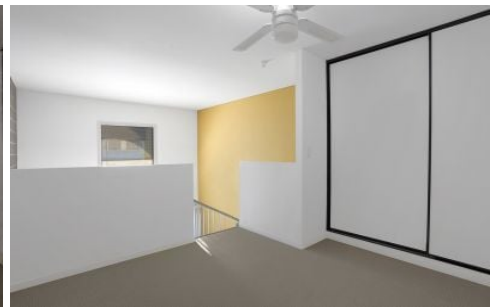
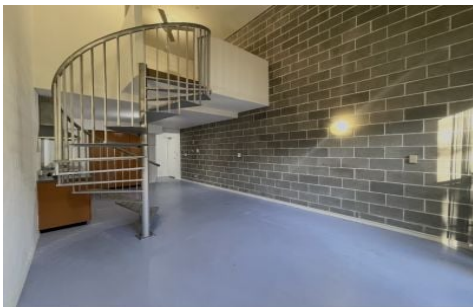


VILLAGE PROPERTY



21/9-27 Moorgate Street Chippendale NSW

1 1

Available from 3rd June -

A warehouse conversion, this quiet and spacious apartment is CBD-fringe living with a slick retreat-like mood. Industrial edges draw on its urban surrounds, amid emerging cafes & dining district.

Type : Apartment

Price : \$700 Per Week

View : <https://www.villageproperty.com.au/lease/nsw/sydney-city/chippendale/residential/apartment/8691957>

Highlights

- * Warehouse detail & corrugated iron
- * Polished concrete & exposed timber
- * Open-plan kitchen/living/dining area
- * Smeg gas kitchen w/ stone benches
- * Open to a full-width outdoor terrace
- * Split level 1 bedroom with separate study area
- * Bathroom & laundry



Zhuoqun (Kate) Zhang
1300 62 44 00

[For full version visit the website](https://www.villageproperty.com.au)

<https://www.villageproperty.com.au>