

# VILLAGE PROPERTY



13.04/7-9 Gibbons Street Redfern NSW

1  1  1 

Available 25th May

Nestled in the 'Urba' building offering sleek contemporary designs, spacious layouts, tons of natural light and panoramic westerly views of the Anzac Bridge. Convenience meets lifestyle in this central city-fringe location within walking distance to the train station, universities, local cafes and wine bars. Only minutes train ride to the CBD and bus routes options for ease of travel.

Lease period minimum 12 months.

Features:

- Open plan living flowing & spacious balcony with westerly views

[For full version visit the website](https://www.villageproperty.com.au/lease/nsw/ea-stern-suburbs/redfern/residential/apartment/8690666)

**Type** : Apartment

**Price** : \$800 Per Week

**View** : <https://www.villageproperty.com.au/lease/nsw/ea-stern-suburbs/redfern/residential/apartment/8690666>



**Alan Wang**  
1300 62 44 00

<https://www.villageproperty.com.au>

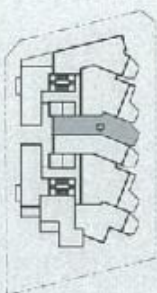


**UNITS 13, 22, 31, 40, 49, 58,**  
67, 76, 85, 94, 103, 112, 121

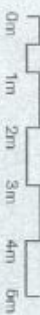
Internal area: 58m<sup>2</sup>  
External area: 8m<sup>2</sup>

Total area: 66m<sup>2</sup>

**Key Plan**



APT	_____
PRICE	_____
LEVEL	_____



This statement was produced prior to commencement of construction. None of the information contained in this document should be relied on or construed as advice, a recommendation or an offer for the sale of property. The developer, its agents and related parties do not make any representation or give any warranties that the information set out in this document is or will remain accurate or complete at all times and the developer does not accept any liability for any loss or damage in connection with any use or reliance on this information. The plans of the apartment and building are indicative only. Changes may be made during the development and any dimensions, finishes and specifications are subject to change without notice.

7-9 Gibbons St, Roddion  
[www.urbarodion.com.au](http://www.urbarodion.com.au)

**8569 8500** **CBRE**  
CB RICHARD ELLIS

