

# VILLAGE PROPERTY



1503/6 Grove Street Dulwich Hill NSW

1 1 1

Available 19th May

Conveniently located in the 'Arlington Grove' complex with gym facility. One minute walk to Arlington Light Rail stop - be in Sydney's CBD in 30 minutes, moments to Johnson Park and Arlington Recreation Reserve and close to vibrant village hubs of Dulwich Hill and Marrickville. You are just a Moments stroll to Johnson Park and Arlington Recreation Reserve and the iconic Sideways Deli Cafe. Located in the inner city hubs of Dulwich Hill and Marrickville, Arlington Grove is at the heart of a new approach to urban style.

Lease period minimum 12 months.

Features:

[For full version visit the website](https://www.villageproperty.com.au)

**Type** : Apartment

**Price** : \$750 Per Week

**View** : <https://www.villageproperty.com.au/lease/nsw/inner-west/dulwich-hill/residential/apartment/8689707>



**Alan Wang**  
1300 62 44 00

<https://www.villageproperty.com.au>

**Arlington**  
Grove Dulwich Hill

**KONA**  
apartments

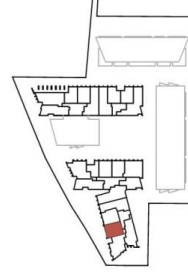
**ONE BEDROOM**  
APARTMENT

1503

INTERNAL AREA: 50m<sup>2</sup>  
EXTERNAL AREA: 16m<sup>2</sup>  
TOTAL: 66m<sup>2</sup>

ARLINGTONGROVE.COM.AU  
**1800 881 221**

**galileo** **CBRE**



Vertical stainless steel wires (or a similar mechanism) will be installed to prevent the light rail from facing the possibility of large items falling onto the light rail

All areas shown are draft and subject to survey. All apartments subject to contract and availability. Images showing the building, interiors and views are computer generated prior to construction and indicative only. Dimensions, layouts, finishes and specifications are subject to change and may differ from those shown. Views differ between apartments. Ground floor retail not yet confirmed. Furniture and plantings are for decorative purposes and are not included.  
01.05.2015