

VILLAGE PROPERTY



1705/226 Victoria Street Potts Point NSW

2  2  1 

Immersed in a breathtaking panorama that takes in spectacular views to the north and east, this stylish apartment offers a dress circle seat to the ever-changing harbour surrounds. It makes an instant impact with its smart modern finishes and clever dual-level design that takes full advantage of the space, natural light and stunning outlooks over Rushcutters Bay and Sydney Harbour. This superb home is enhanced by a privileged city-edge position within walking distance to the local cafe and wine bar scene, a choice of transport options and the CBD.

- Set high on the 17th floor of Potts Point's architectural 'Omnia' tower
- Floor-to-ceiling walls of glass maximise the fabulous vista
- Panoramic views stretch over Sydney Harbour and

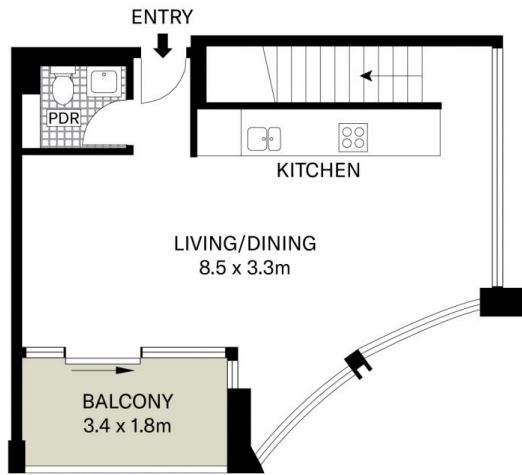
[For full version visit the website](https://www.villageproperty.com.au)

Type : Apartment
Price : \$2,460,000
View : <https://www.villageproperty.com.au/sale/nsw/eastern-suburbs/potts-point/residential/apartment/8687073>

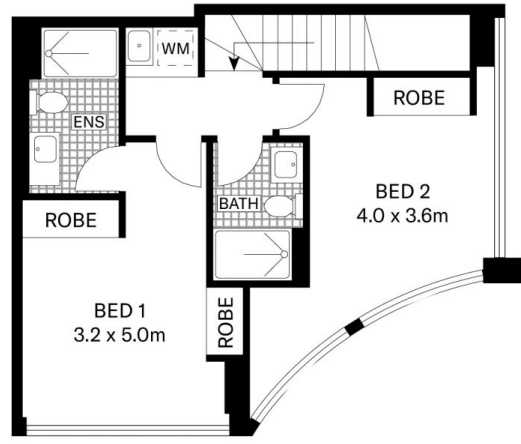


Jack Williams
1300 62 44 00

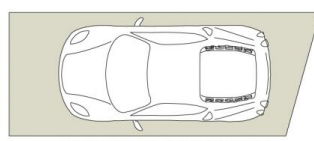
<https://www.villageproperty.com.au>



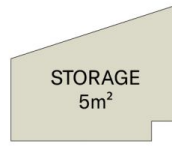
LOWER FLOOR



UPPER FLOOR



SECURITY CAR SPACE
5.5 x 2.3m



STORAGE
5m²

All information contained herein is gathered from sources we believe to be reliable.
We cannot however guarantee its accuracy and parties should and rely on their own requirements.



1705/226 Victoria Street, Potts Point

VILLAGE
PROPERTY