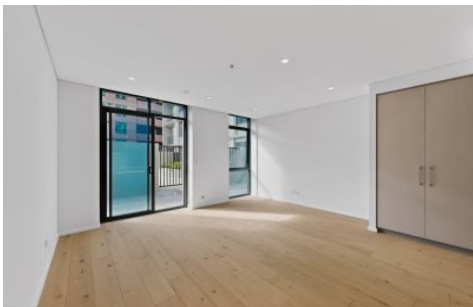


# VILLAGE PROPERTY



**G47/1C Conferta Avenue Tallawong NSW**

2  2  1 

"TALLAWONG VILLAGE"

Available 11th May

Live the life you always imagined at "Tallawong Village", a beautifully curated modern great value 2 bedroom apartment with secure parking.

Only a 2-minute walk to the new Tallawong Metro Station, with trains every 4 minutes, Tallawong Village is poised to take you wherever you need to go but gives you a thousand reasons to stay.

- Brand new two bedroom, two bathroom home with parking

[For full version visit the website](https://www.villageproperty.com.au/lease/nsw/western-sydney/tallawong/residential/apartment/8684161)

**Type** : Apartment  
**Price** : \$750 Per Week  
**View** : <https://www.villageproperty.com.au/lease/nsw/western-sydney/tallawong/residential/apartment/8684161>

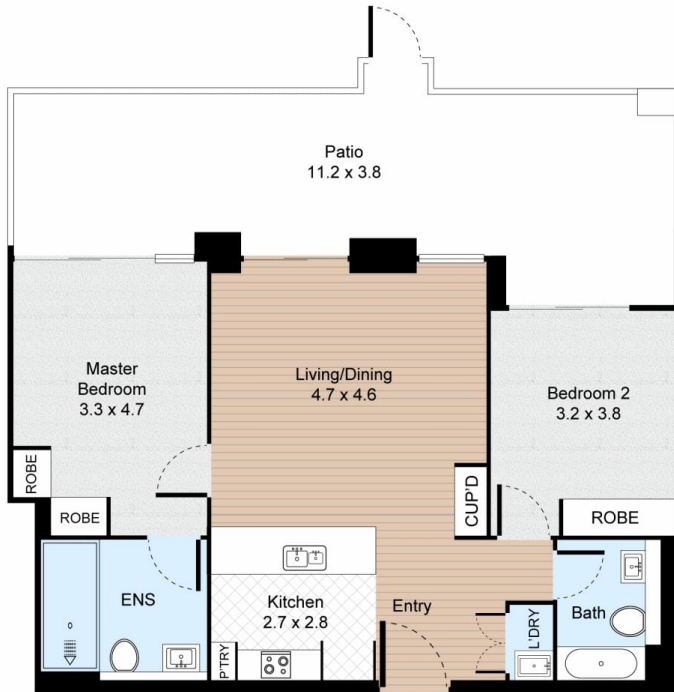


**Melanie Brown**  
1300 62 44 00

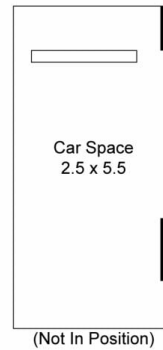
<https://www.villageproperty.com.au>

# Unit G47, 1C Conferta Avenue, Tallawong

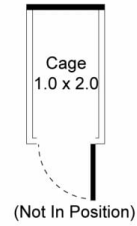
2 Bed 2 Bath 1 Car



FLOOR PLAN

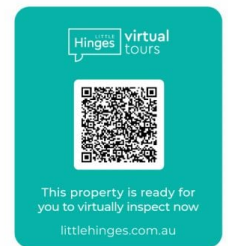


CAR SPACE



CAGE

Internal : 78m<sup>2</sup>  
External : 51m<sup>2</sup>



VILLAGE PROPERTY

All information contained herein is gathered by Little Hinges. Whilst the scanning technology is highly reliable, we cannot guarantee its accuracy and interested parties should rely on their own enquiries.