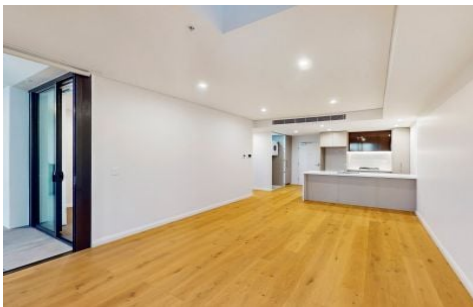


# VILLAGE PROPERTY



705/27 Ashford Avenue Castle Hill NSW

2 2 1

Available from 5th of May 2026

Castle Hill's premier residential apartments. Perfectly located within a vibrant village precinct in The Hills District, just moments from Showground Metro station, The Ashford is the home you've been seeking, offering the lifestyle you deserve.

Features Include:

- Open plan kitchen with built-in oven, cooktop, dishwasher.
- Timber flooring throughout living area.
- Spacious bedrooms with built-in wardrobes.
- Ducted air conditioning.
- Spacious bathroom with large storage cabinet with mirror doors, long niche, shower with mixer tap and beautiful

**Type** : Apartment

**Price** : \$830 Per Week

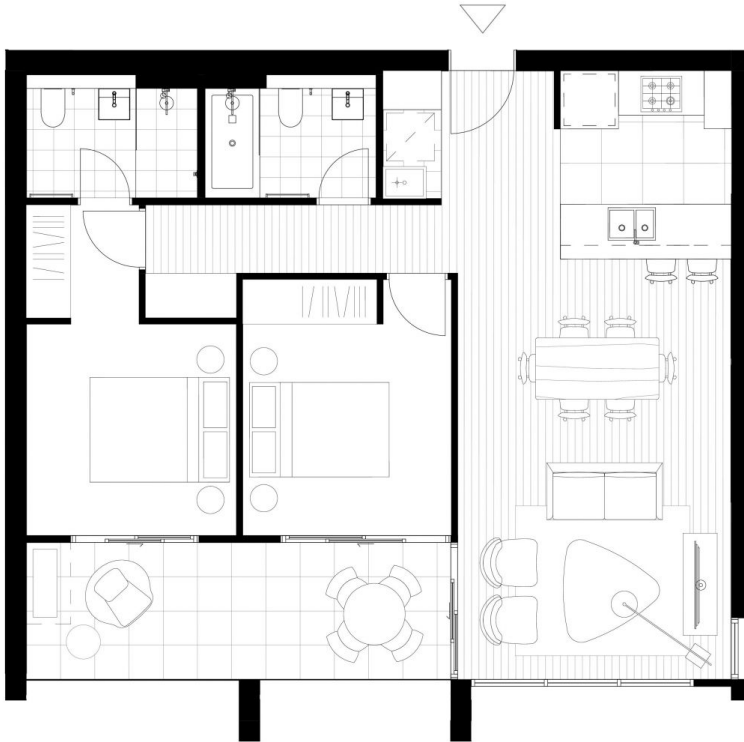
**View** : <https://www.villageproperty.com.au/lease/nsw/hills/castle-hill/residential/apartment/8683457>



**David Ngo**  
1300 20 55 69

[For full version visit the website](https://www.villageproperty.com.au)

<https://www.villageproperty.com.au>



**THE ASHFORD**  
CASTLE HILL

Apartment 506, 605, 705

 2 BEDROOMS	 2 BATHROOM	 0 STUDY/FLEXI
--	--	---

Total	89m <sup>2</sup>
INTERNAL	78m <sup>2</sup>
EXTERNAL	11m <sup>2</sup>



25 Ashford Avenue  
Castle Hill  
1300 290 212  
theashfordcastlehill.com.au



Updated 29 November 2021 - Note: this plan is a guide only and does not constitute an offer or contract. Please note that changes may be made to the development during construction and elements such as walls, fittings, fixtures etc. may change without notice. All parties should rely on their own investigation to verify the information as it is not guaranteed. No liability will be accepted for any inaccuracy or misstatement.