




VILLAGE PROPERTY



1307/225 Pacific Highway North Sydney NSW

2  2  1 

Available February 18th

This two bedroom apartment features stylish open plan living, gourmet gas kitchen with Miele appliances.

Located just minutes from North Sydney Station, buses and ferries and North Sydney's shopping precinct, cafes and restaurants.

Features include:

- Stunning interiors and designer finishes
- Spacious bedrooms with built-in wardrobes
- Stunning water and district views
- Modern bathrooms with good storage

[For full version visit the website](https://www.villageproperty.com.au/lease/nsw/north-shore-lower/north-sydney/residential/apartment/8605624)

Type : Apartment

Price : \$1250 Per Week

View : <https://www.villageproperty.com.au/lease/nsw/north-shore-lower/north-sydney/residential/apartment/8605624>

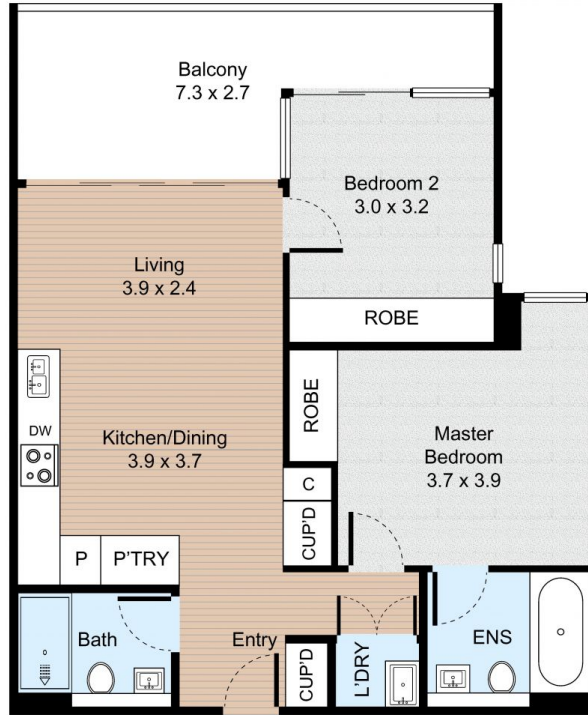


Taneisha Kerr
1300 62 44 00

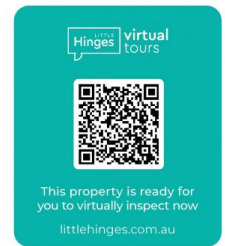
Unit 1307, 225 Pacific Highway, North Sydney



2 Bed 2 Bath



Internal : 66m²
External : 13m²



FLOOR PLAN

VILLAGE PROPERTY

All information contained herein is gathered by Little Hinges. Whilst the scanning technology is highly reliable, we cannot guarantee its accuracy and interested parties should rely on their own enquiries.