

VILLAGE PROPERTY



3/213 Princes Highway Arncliffe NSW

1  1  1 

Entrance via Building A

With a prized North-East facing aspect this sun-drenched apartment delivers an exceptional lifestyle offering. Free-flowing living and dining areas extend seamlessly to a large private courtyard, creating the perfect setting for entertaining or relaxed year-round open-air living.

The thoughtfully designed layout features a generously proportioned bedroom and a stylish bathroom, complemented by contemporary finishes throughout. Open-plan living and dining areas provide flexibility and comfort, ideal for modern living.

Enjoying a highly sought-after location, the residence is just

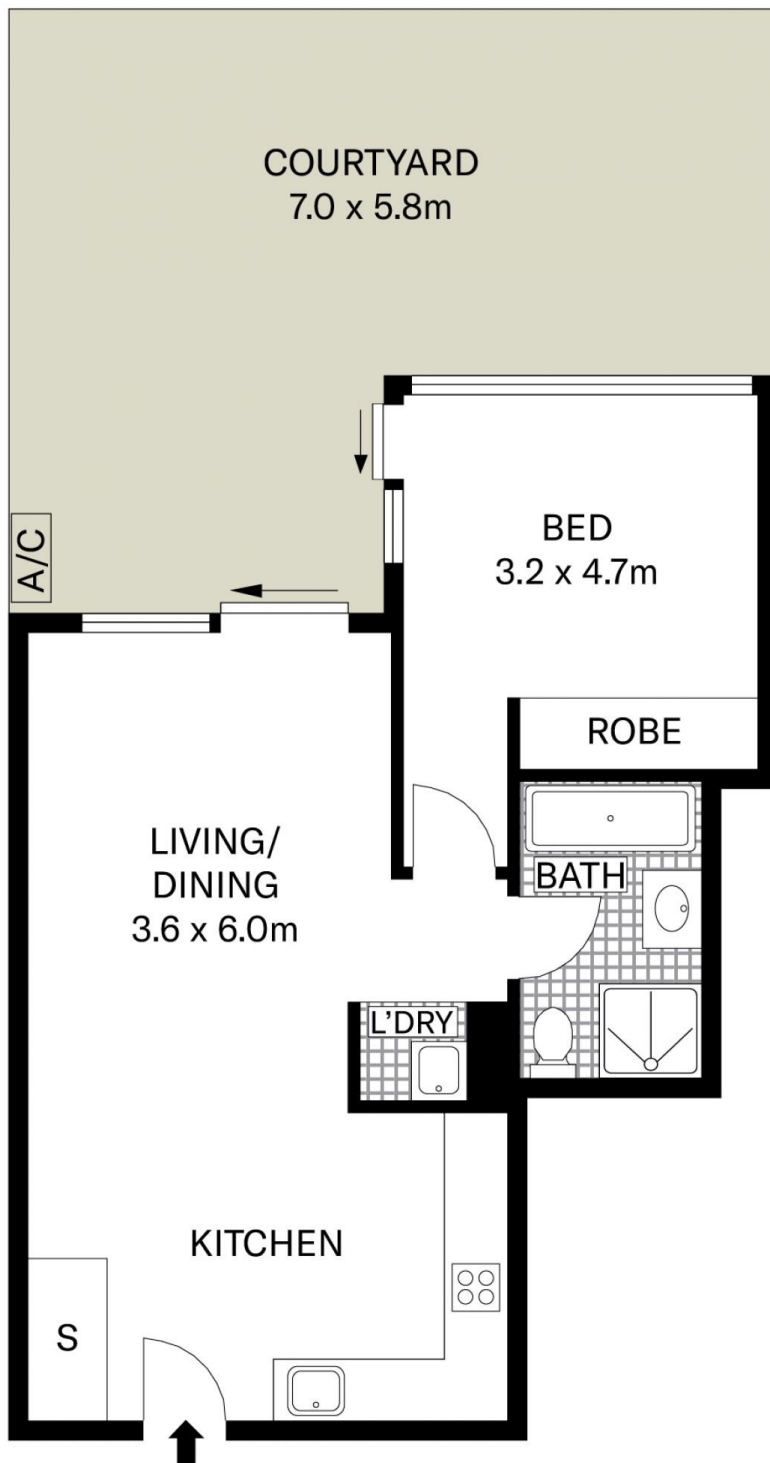
[For full version visit the website](https://www.villageproperty.com.au)

Type : Apartment
Price : SOLD X TYLER TAYLOR
Land Size : 113 sqm
View : <https://www.villageproperty.com.au/sale/ns-w/st-george/arncliffe/residential/apartment/8604952>

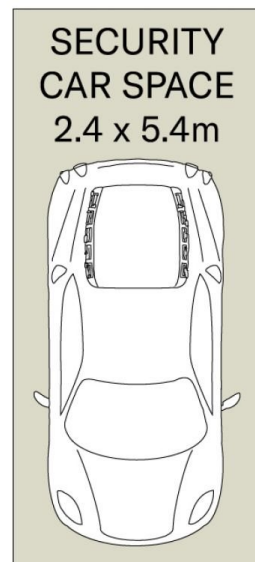


Tyler Taylor
1300 62 44 00

<https://www.villageproperty.com.au>



STORAGE
CAGE
1.5 x 1.0m



All information contained herein is gathered from sources we believe to be reliable. We cannot however guarantee its accuracy and parties should and rely on their own requirements.



3/213 Princes Highway, Arncliffe

VILLAGE
PROPERTY