

VILLAGE PROPERTY



131 Elizabeth Street Ashfield NSW

5 🛏 2 🚿 2 🚗

Full of character, size and potential, this handsome Victorian-era terrace represents a prime opportunity for those seeking an attractive traditional home in a prized lifestyle suburb.

The well-presented property is ready to enjoy yet delivers lots of future potential to update or redesign to give it extra appeal and make a sensational Ashfield residence within easy reach of dining venues, schools, major shopping and transport options - and just one block from the Ashfield Aquatic Centre.

- Generous 352sqm north-to-rear block with a wide frontage
- Set back from the road behind a front garden and side driveway

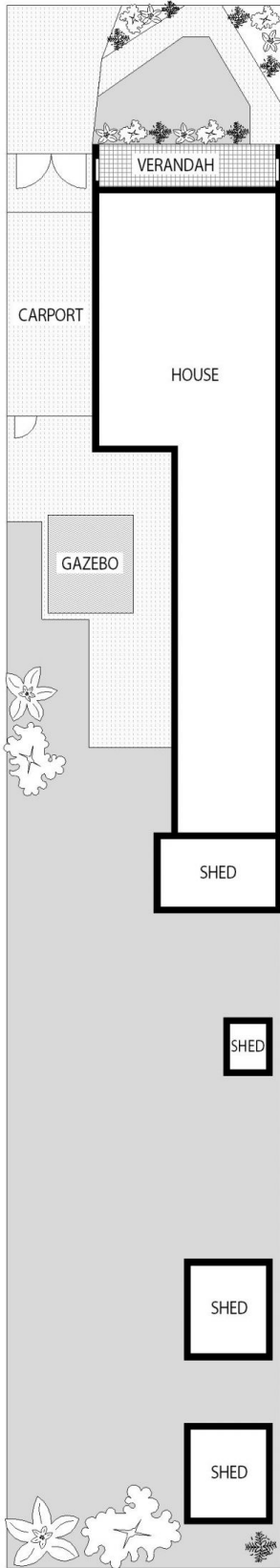
[For full version visit the website](https://www.villageproperty.com.au)

Type : House
Price : \$2,270,000
Land Size : 352 sqm
View : <https://www.villageproperty.com.au/sale/inner-west/ashfield/residential/house/8602306>

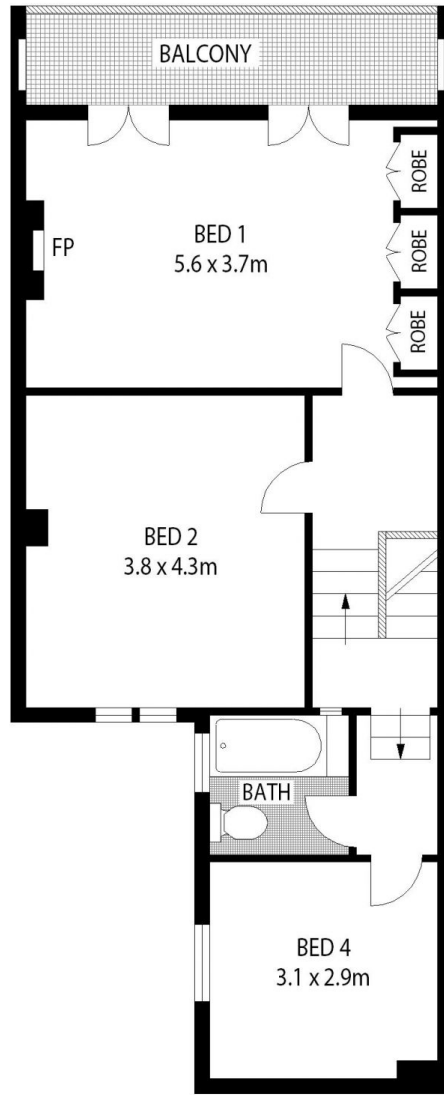


Nick Barnett
1300 62 44 00

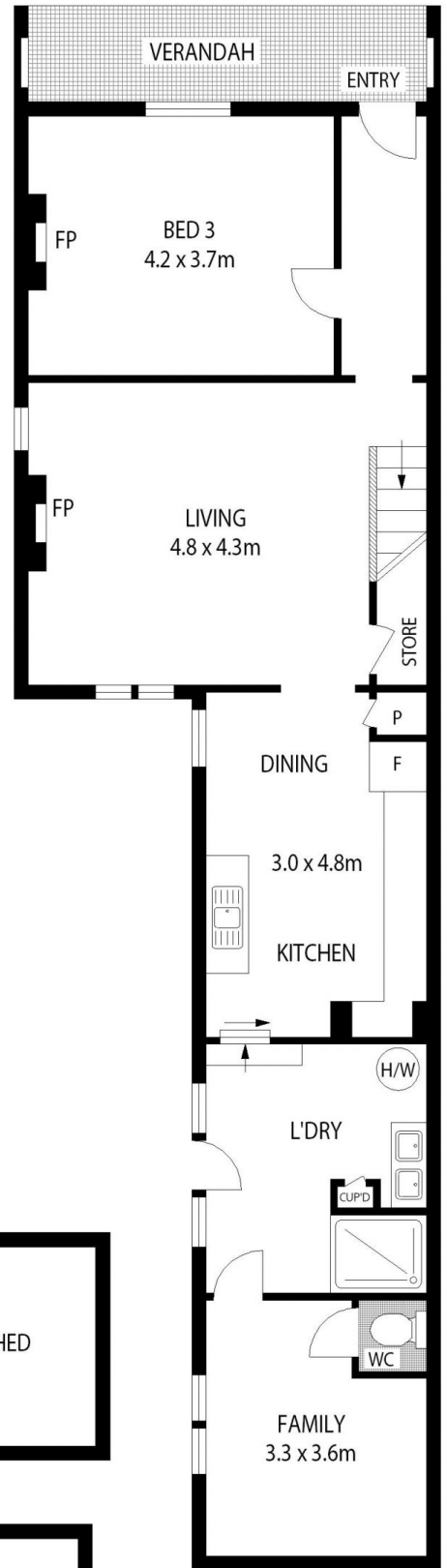
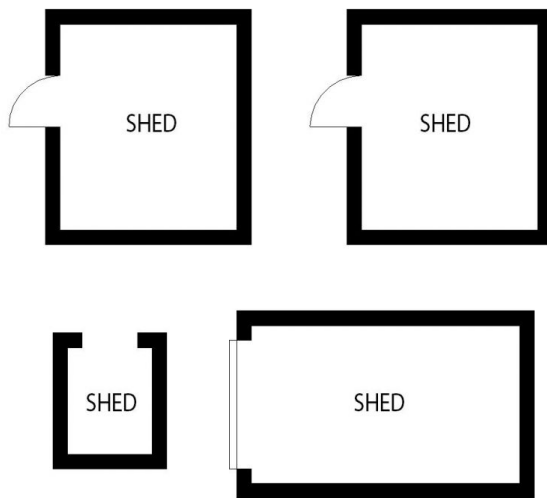
<https://www.villageproperty.com.au>



SITE PLAN (NOT TO SCALE)



LEVEL ONE



GROUND LEVEL



131 ELIZABETH STREET

ASHFIELD

SCAPE Floor Planning Disclaimer: This floor plan is conceptual only. It is provided for illustrative purposes only and should not be relied upon. We make no guarantee as to the correctness of this plan. All interested parties should make and rely on their own enquiries in determining the accuracy of the information contained in this floor plan.