

VILLAGE PROPERTY



1941/9 Maple Tree Road Westmead NSW

3  **2**  **2** 

Available 5th of February 2026

Just 2 minutes to the train station and 5 minutes to Westmead Hospital. 35 minutes to Sydney CBD and 1 stop on the train to Parramatta. Westmead's premier residence sets the pace for Sydney's West offering an enviable lifestyle of the highest quality.

Type : Apartment

Price : \$950 Per Week

View : <https://www.villageproperty.com.au/lease/nsw/parramatta/westmead/residential/apartment/8593279>

Features Include:

- Three spacious bedrooms with Built in Robes
- Ensuite to main bedroom
- High quality timber floors throughout
- Kitchen with stone bench-tops and splash-backs, Smeg appliances including gas cooktop, dishwasher and microwave



David Ngo
1300 20 55 69

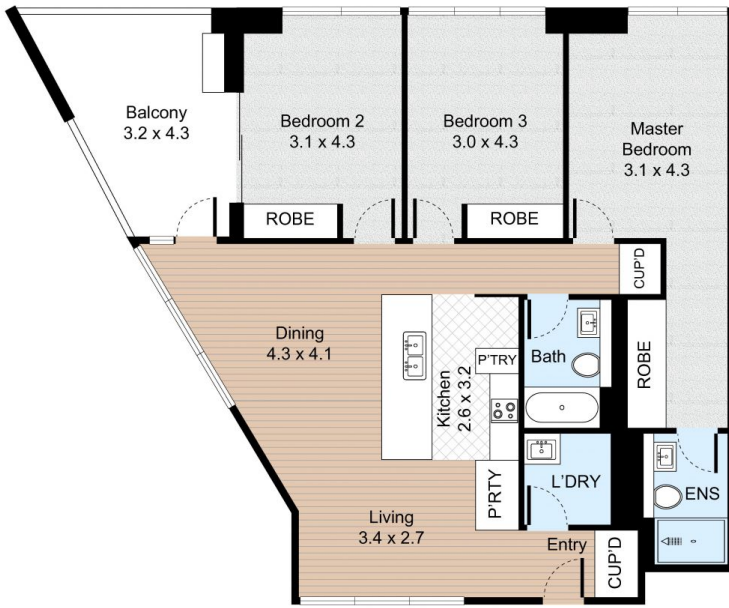
[For full version visit the website](https://www.villageproperty.com.au)

<https://www.villageproperty.com.au>

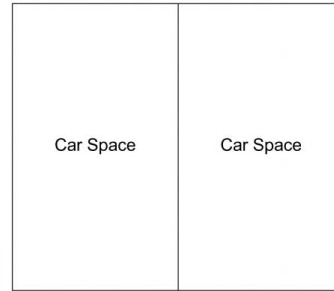
Unit 1941, 9 Maple Tree Road, Westmead



3 Bed 2 Bath 2 Car



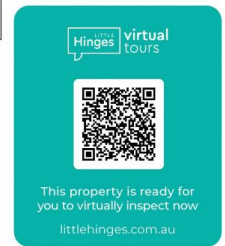
FLOOR PLAN



(Not In Position)

CAR SPACE

Internal : 107m²
External : 14m²



VILLAGE PROPERTY

All information contained herein is gathered by Little Hinges. Whilst the scanning technology is highly reliable, we cannot guarantee its accuracy and interested parties should rely on their own enquiries.