

VILLAGE PROPERTY



709/10 Village Place Kirrawee NSW

1  1  1 

Available 26th November

Unmatched in refinement, 'South Village' apartments are some of the most exquisite residences on offer. Superbly located, this beautiful apartment is a unique opportunity to experience quintessential living in an urban lifestyle.

Anchored by Coles supermarket just downstairs and Woolworths just footsteps away for all your everyday grocery needs. Enjoy the absolute convenience to shops, supermarkets, cafes, restaurants, child care centre and park all located just downstairs. Short 5 minutes walk to Kirrawee train station.

Lease periods minimum 12 months.

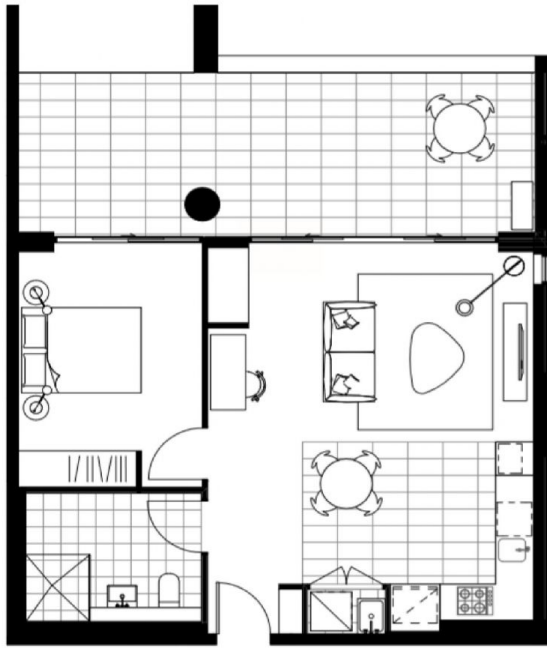
[For full version visit the website](https://www.villageproperty.com.au)

Type : Apartment
Price : DEPOSIT TAKEN
Building Size : 84 sqm
View : <https://www.villageproperty.com.au/lease/nsw/sutherland/kirrawee/residential/apartment/8547450>



Alan Wang
1300 62 44 00

<https://www.villageproperty.com.au>

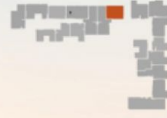


PRICE

PARKING

South Village kinnaroo

Building D Key Plan



Level 7
D7.09

1 BED 1 BATH

TOTAL 84 sqm

INTERNAL AREA 59 sqm

BALCONY AREA 25 sqm

Note: this plan is a guide only and does not constitute an offer or contract. Please note that changes may be made to the development during construction and drawings such as areas, fittings, fixtures etc. may change without notice. All parties should rely on their own investigation to validate this information as it is not guaranteed. No liability will be accepted for any inaccuracy or misstatement.

www.southvillageapartments.com.au
1800 334 267