

VILLAGE PROPERTY



108/18 Bayswater Road Potts Point NSW

1 1

Available 27th October

Set in the cosmopolitan hub of Potts Point, this contemporary apartment offers the perfect balance of modern living, style, and convenience. Within the highly regarded The Manor development it's a prime opportunity for those looking to enjoy the best of city living, just steps from all that Potts Point has to offer.

Enjoy a lifestyle surrounded by vibrant cafes, bars, restaurants, and cultural landmarks, all while being moments from the city center and stunning Sydney Harbour. Just a stroll away from the CBD and Sydney's extensive transport network, and moments to Woolloomooloo's dining, Darlinghurst's cafés and

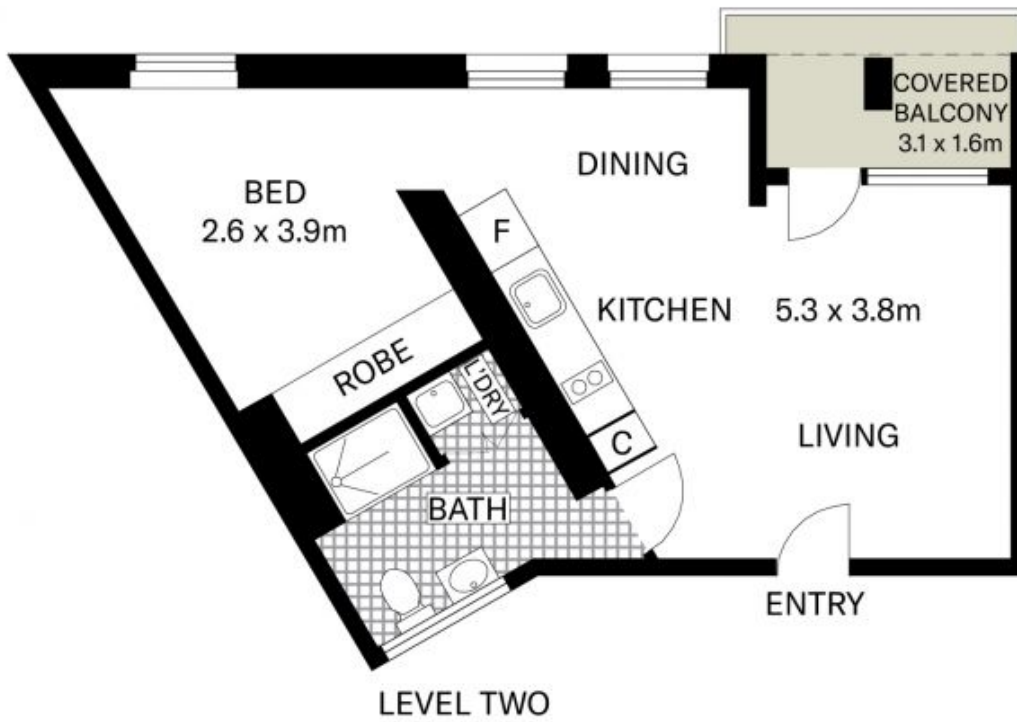
Type : Apartment
Price : DEPOSIT TAKEN
View : <https://www.villageproperty.com.au/lease/nsw/ea-stern-suburbs/potts-point/residential/apartment/8494089>



Alan Wang
1300 62 44 00

[For full version visit the website](https://www.villageproperty.com.au)

<https://www.villageproperty.com.au>



All information contained herein is gathered from sources we believe to be reliable.
We cannot however guarantee its accuracy and parties should and rely on their own requirements.



108/18 Bayswater Road, Potts Point