

# VILLAGE PROPERTY



**222/16 Fennelly Street Randwick NSW**

1 1

Available 29th September

Presenting a brand new premium apartment in the prestigious Young & Fennelly building at Newmarket Randwick, showcasing a stylish blend of modern luxury and urban convenience. Offering a smart functional north aspect floorplan with open living and dining space inviting abundance of natural light. Exclusive access to resident's rooftop communal garden featuring BBQ facilities and seating areas overlooking panoramic views.

Easy access to local parks, cafes and restaurants all located at your door with city transport also within walking distance. Minutes away to schools, UNSW, Prince of Wales Hospital, Light Rail, Randwick Village shopping centre,

**Type** : Apartment

**Price** : DEPOSIT TAKEN

**View** : <https://www.villageproperty.com.au/lease/nsw/eastern-suburbs/randwick/residential/apartment/8491052>



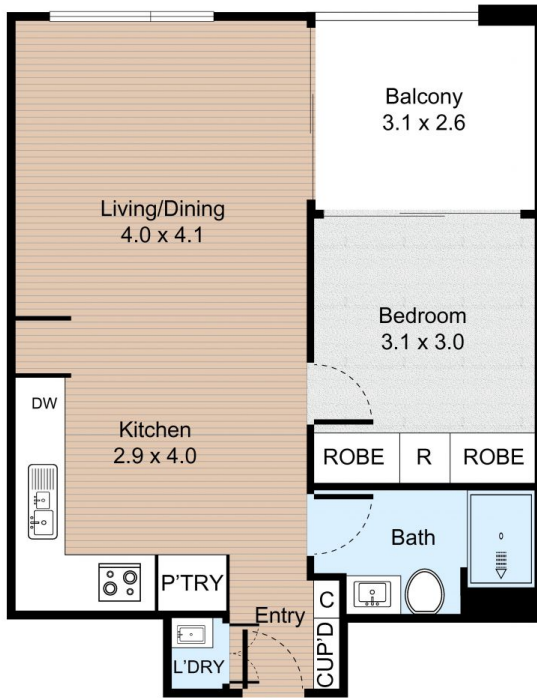
**Alan Wang**  
1300 62 44 00

[For full version visit the website](https://www.villageproperty.com.au)

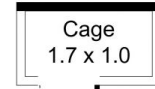
<https://www.villageproperty.com.au>

# Unit 222, 16 Fennelly Street, Randwick

1 Bed 1 Bath



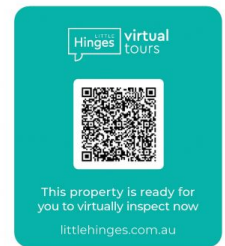
FLOOR PLAN



(Not In Position)

CAGE

Internal : 54m<sup>2</sup>  
External : 10m<sup>2</sup>



## VILLAGE PROPERTY

All information contained herein is gathered by Little Hinges. Whilst the scanning technology is highly reliable, we cannot guarantee its accuracy and interested parties should rely on their own enquiries.