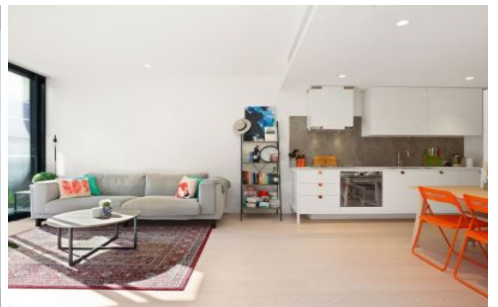


VILLAGE PROPERTY



B603/72 MacDonald Street Erskineville NSW

1 1

Available 30th September

Centrally located close to shops and public transport this apartment boasts stylish finishes with timber flooring and floor to ceiling glass balcony doors that slide right across to really open up the living area. Bedroom includes built in study desk.

Eve Apartments offers an unbeatable urban lifestyle just 10 minutes from the CBD. Only 8 minutes to Erskineville train station and centrally located in Erskineville's famous café and restaurant precinct. Be entertained, be indulged and be nourished with the best in dining, shopping and entertainment close by. Woolworths Metro Park Sydney minutes walk away for your everyday shopping needs at

Type : Apartment

Price : DEPOSIT TAKEN

View : <https://www.villageproperty.com.au/lease/nsw/inner-west/erskineville/residential/apartment/8479727>



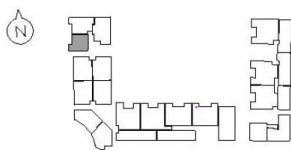
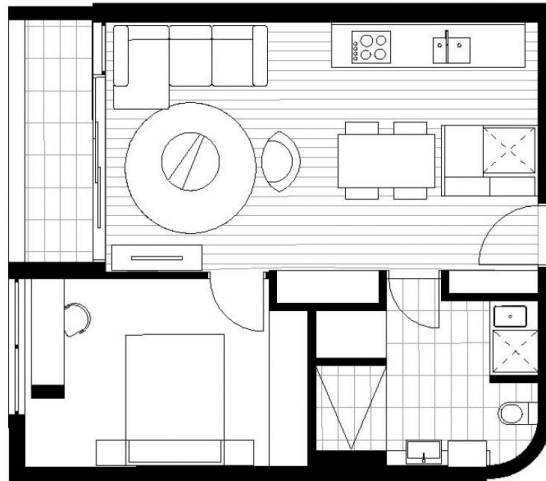
Alan Wang
1300 62 44 00

[For full version visit the website](https://www.villageproperty.com.au)

<https://www.villageproperty.com.au>

EVE

BY Fridcorp™



Macdonald St

APARTMENT B603

Internal 49.8m²
 External 4.4m²
 Total 54.2m²

For more information
 1800 221 336
EveByFridcorp.com.au

Disclaimer: This plan is a guide only and does not constitute an offer or contract. Please note changes may be made during the development and areas, fittings, fixtures and specifications are subject to change without notice in accordance with the terms of the contract of sale. All parties must rely on their own investigation to validate this information as it is not guaranteed. No liability will be accepted for any inaccuracy or misstatement. (B)

**Hecker
Guthrie**



CBRE