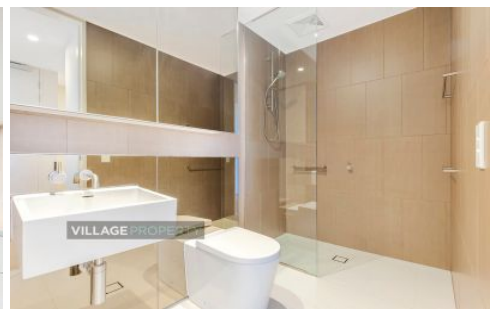
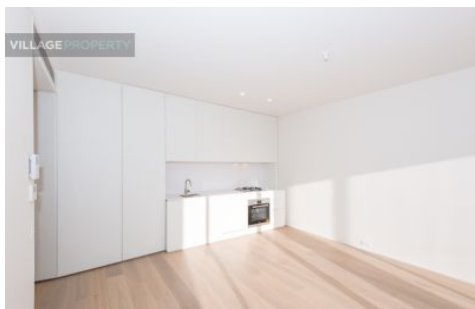
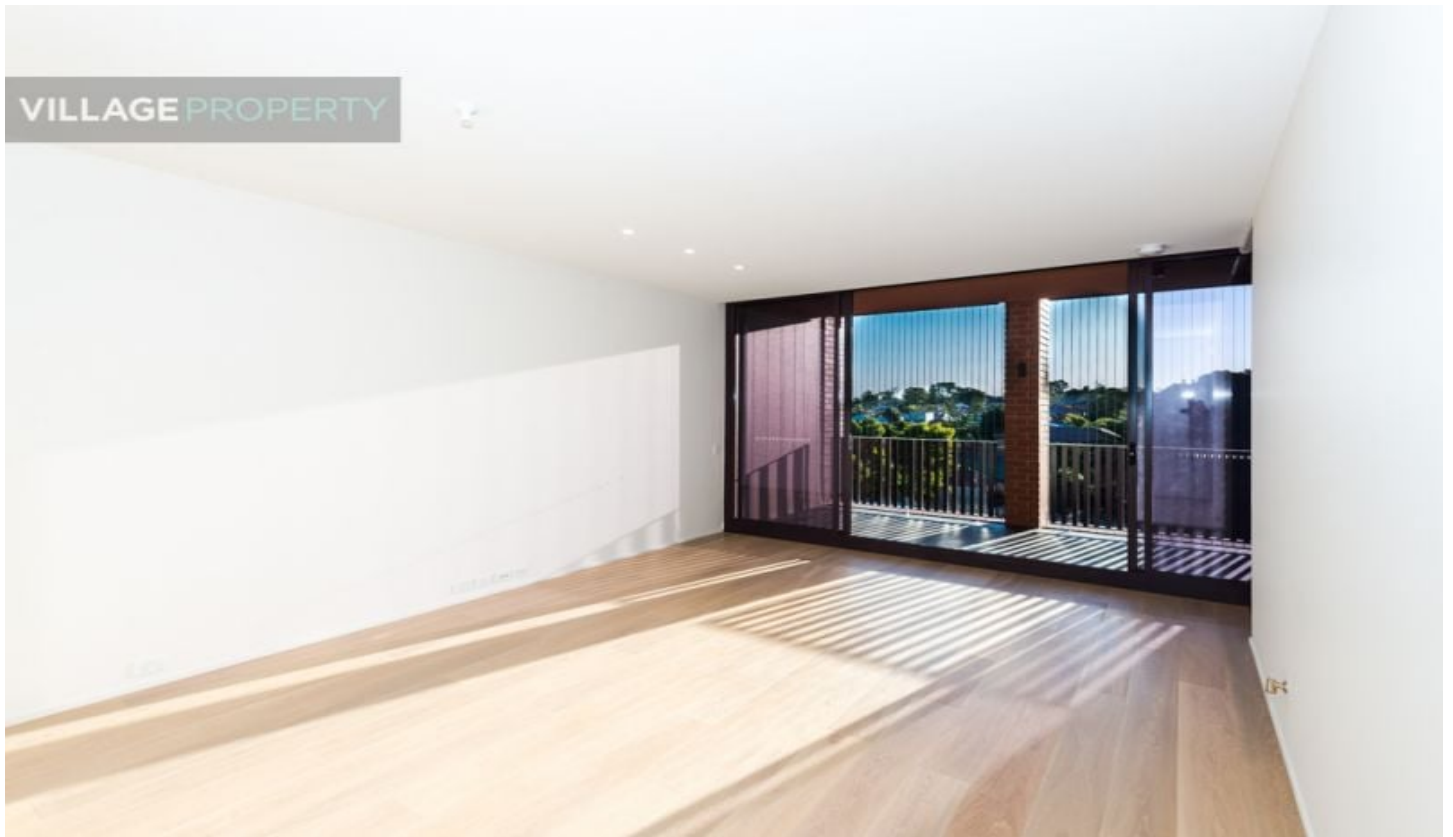


VILLAGE PROPERTY



1205/6 Grove Street Dulwich Hill NSW

1 1 1

Available 2nd October

Regarded with high quality finishes and its smart floor plan, this modern development presented in the 'Arlington Grove' complex is conveniently located; one minute walk to Arlington Light Rail stop - be in Sydney's CBD in 30 minutes, moments to Johnson Park and Arlington Recreation Reserve and close to vibrant village hubs of Dulwich Hill and Marrickville. You are just a Moments stroll to Johnson Park and Arlington Recreation Reserve and the iconic Sideways Deli Cafe. Located in the inner city hubs of Dulwich Hill and Marrickville, Arlington Grove is at the heart of a new approach to urban style.

Lease periods minimum 12 months.

[For full version visit the website](https://www.villageproperty.com.au/lease/nsw/inner-west/dulwich-hill/residential/apartment/8472800)

Type : Apartment
Price : DEPOSIT TAKEN
View : <https://www.villageproperty.com.au/lease/nsw/inner-west/dulwich-hill/residential/apartment/8472800>



Alan Wang
1300 62 44 00

<https://www.villageproperty.com.au>

Arlington
Grove Dulwich Hill

KONA
apartments

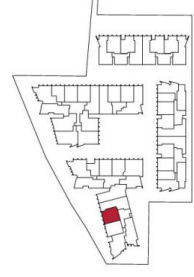
**ONE BEDROOM +
STUDY
APARTMENT**

1205

INTERNAL AREA: 55m²
EXTERNAL AREA: 16m²
TOTAL: 71m²

ARLINGTONGROVE.COM.AU
1800 881 221

galileo **CBRE**



Vertical stainless steel wires
(or a similar mechanism) will
be installed in the ceiling
facing the light rail to prevent
the possibility of large items
falling onto the light rail

All areas shown are draft and subject to survey. All apartments subject to contract and availability. Images showing the building, interiors and views are computer generated prior to construction and indicative only. Dimensions, layouts, finishes and specifications are subject to change and may differ from those shown. Views differ between apartments. Ground floor retail not yet confirmed. Furniture and plantings are for decorative purposes and are not included.
01.05.2015