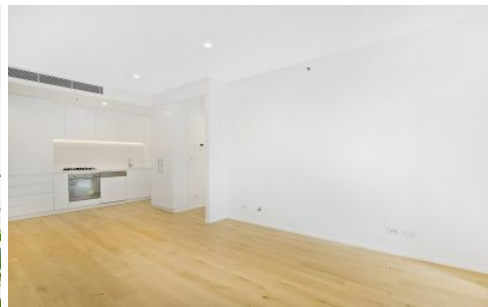


VILLAGE PROPERTY



1202/23 Pelican Street Surry Hills NSW

1  1  1 

Available 29th September

At the top of Surry Hills resides a spectacular apartment block with stunning interior features in a convenient location. With classic, luxurious styling and generous layout for apartments so close to the CBD; the Pelican apartments are exquisitely crafted for your comfort and convenience.

Spacious living and dining, clever separation between open areas and sleeping zones as well as smart storage options are built in. A stones throw from the vibrant Oxford street and surrounded by all the amenities of inner city living. Only 7 minutes walk to Museum Train Station. Enjoy the buzz of the latest bars, cafes and popular restaurants within walking distance. 400 metres from Hyde Park. Move

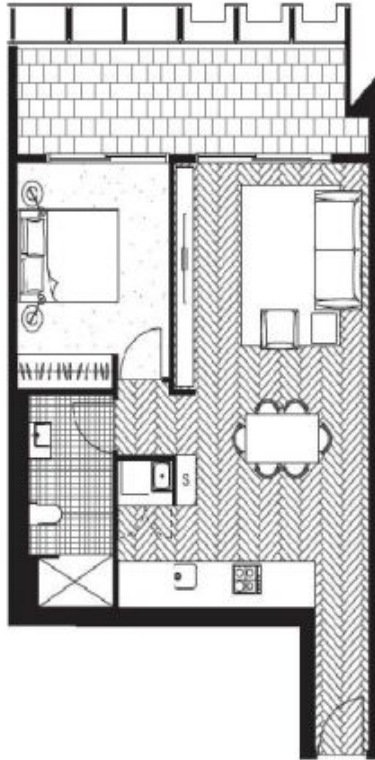
[For full version visit the website](https://www.villageproperty.com.au)

Type : Apartment
Price : DEPOSIT TAKEN
View : <https://www.villageproperty.com.au/lease/nsw/ea-stern-suburbs/surry-hills/residential/apartment/8466744>



Alan Wang
1300 62 44 00

<https://www.villageproperty.com.au>



THE
PELICAN
SURRY HILLS

UNIT 12.02

*One Bedroom
One Bathroom*

INTERNAL AREA 55m²
EXTERNAL AREA 12m²
TOTAL AREA 67m²

1800 663 638
THEPELICAN.COM.AU



STASIA **CBRE**

Disclaimer: The pictures are not an offer, it is a general guide for the general information of the property. The pictures are not intended to be used as a basis for any investment decision. The pictures are not intended to be used as a basis for any investment decision. The pictures are not intended to be used as a basis for any investment decision. The pictures are not intended to be used as a basis for any investment decision.