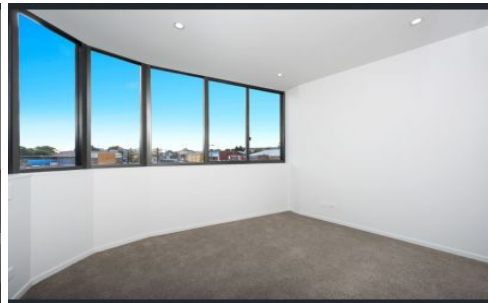
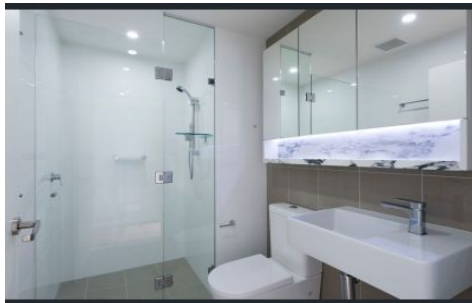
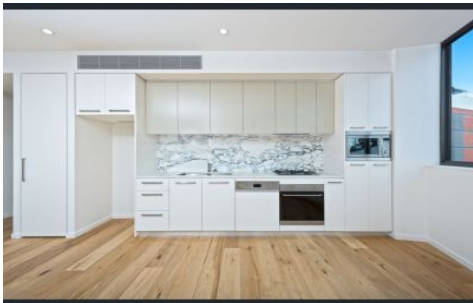


VILLAGE PROPERTY



206/8 Wharf Road Gladesville NSW

1 1 1

Available 18th September

"Wharf Square" sits proudly at the crest of Victoria Rd, Gladesville and sets the pace for executive style residences in one of Sydney's most liveable areas. Ideally located close to transport, retail hubs, cafes, restaurants and local amenities including schools and park lands. Only 6 minutes walk to Gladesville Shopping Village anchored by Coles supermarket for your everyday grocery needs at your convenience.

Resident's communal rooftop terrace offering uninterrupted panoramic views to the City and Sydney's suburban surrounds. With BBQ, bathroom facilities and ample seating this is the perfect position to relax or entertain.

[For full version visit the website](https://www.villageproperty.com.au)

Type : Apartment

Price : DEPOSIT TAKEN

View : <https://www.villageproperty.com.au/lease/nsw/northern-suburbs/gladesville/residential/apartment/8463642>



Alan Wang
1300 62 44 00

<https://www.villageproperty.com.au>