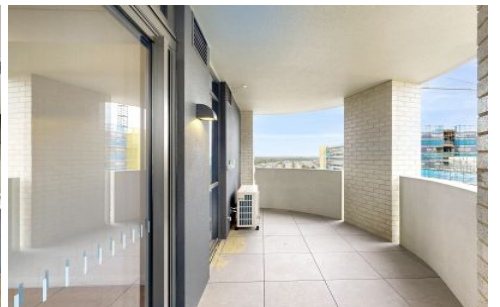
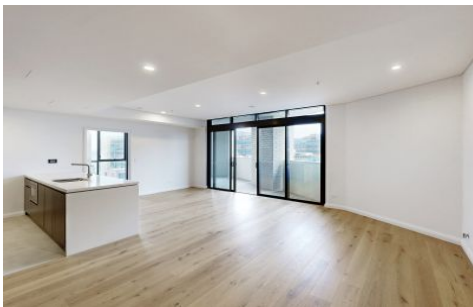


# VILLAGE PROPERTY



526/2C Conferta Avenue Tallawong NSW

2 2 1

"TALLAWONG VILLAGE"

Live the life you always imagined at "Tallawong Village", a beautifully curated brand new and great value 2 bedroom apartment with secure parking.

Only a 2-minute walk to the new Tallawong Metro Station, with trains every 4 minutes, Tallawong Village is poised to take you wherever you need to go but gives you a thousand reasons to stay.

- Near new two bedroom, two bathroom home with parking.
- Beautiful natural light in all rooms
- Spacious bedrooms with built-in wardrobes
- Situated on Level 5 with area views

[For full version visit the website](https://www.villageproperty.com.au/lease/nsw/western-sydney/tallawong/residential/apartment/8397544)

**Type** : Apartment

**Price** : \$700 Per Week

**View** : <https://www.villageproperty.com.au/lease/nsw/western-sydney/tallawong/residential/apartment/8397544>



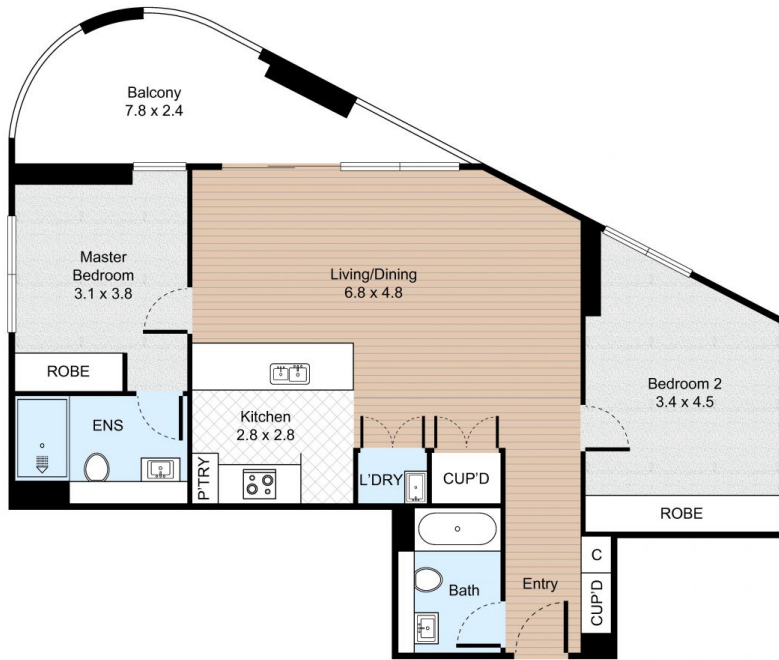
**Zhuoqun (Kate) Zhang**  
1300 62 44 00

<https://www.villageproperty.com.au>

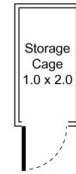
# Unit C526, 2 Conferta Avenue, Tallawong, New South Wales



2 Bed 2 Bath 1 Car

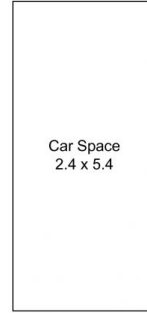


FLOOR PLAN



(Not In Position)

### STORAGE CAGE



(Not In Position)

Internal : 87m<sup>2</sup>  
External : 30m<sup>2</sup>



CAR SPACE

VILLAGE PROPERTY

All information contained herein is gathered by Little Hinges. Whilst the scanning technology is highly reliable, we cannot guarantee its accuracy and interested parties should rely on their own enquiries.