

VILLAGE PROPERTY



802/97 Dalmeny Avenue Rosebery NSW

2  2  1 

This stylish 'Genesis' residence offers a superb living space that is private, secure and centrally located for lifestyle.

- Light-filled single-level layout with a breezy open plan design
- Large covered entertainment balcony and sweeping district outlooks
- Two spacious bedrooms each feature generous built-in storage
- Bright master bedroom currently has a king size bed with two bedside tables - would also comfortably fit a queen bed and extra storage
- Open modern gas kitchen with large breakfast bench and sleek appliances
- Good-sized main bathroom with bathtub, plus an en-suite

Type : Apartment

Price : \$1100 Per Week

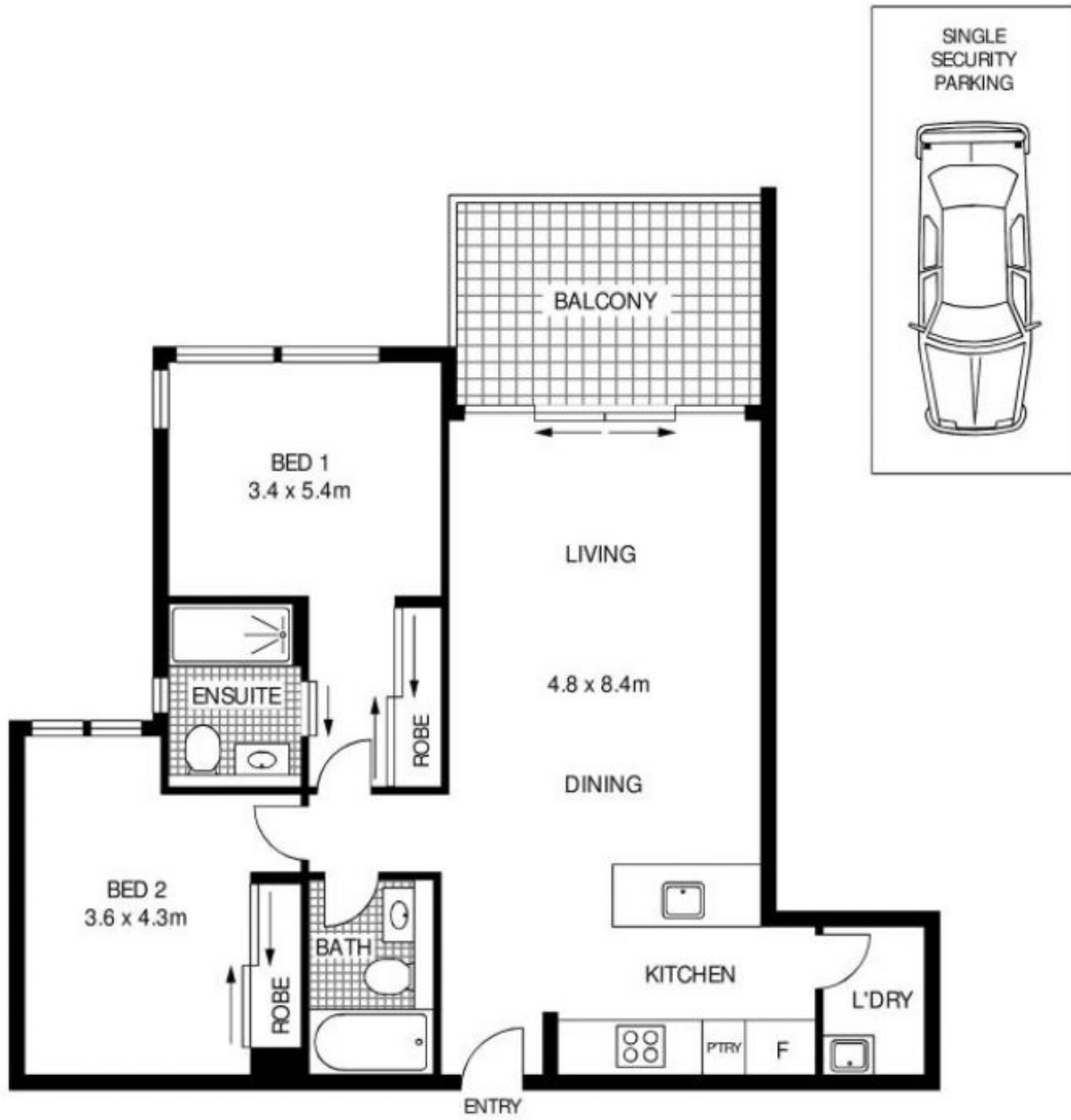
View : <https://www.villageproperty.com.au/lease/nsw/eastern-suburbs/rosebery/residential/apartment/8377679>



Melanie Brown
1300 62 44 00

[For full version visit the website](https://www.villageproperty.com.au)

<https://www.villageproperty.com.au>



D802/97 DALMENY AVENUE

ROSEBERY

SCAPE Floor Planning Disclaimer: This floor plan is conceptual only. It is provided for illustrative purposes only and should not be relied upon. We make no guarantee as to the correctness of this plan. All interested parties should make and rely on their own enquiries in determining the accuracy of the information contained in this floor plan.