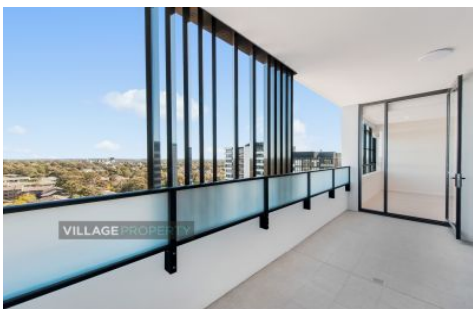


# VILLAGE PROPERTY



1305/4 Kiln Road Kirrawee NSW

2  2  1 

Available 18th June -

Unmatched in refinement, South Village apartments are some of the most exquisite residences on offer. Superbly located, this beautiful and high level apartment is a unique opportunity to experience quintessential living in an urban lifestyle.

Anchored by Coles supermarket just downstairs and Woolworths just footsteps away for all your everyday grocery needs. Enjoy the absolute convenience to shops, supermarkets, cafes, restaurants, child care centre and park all located just downstairs. Short 5 minutes walk to Kirrawee train station.

**Type** : Apartment

**Price** : DEPOSIT TAKEN

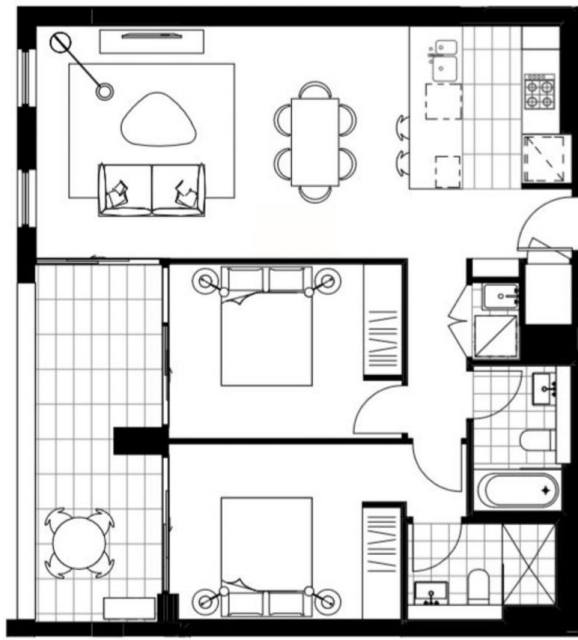
**View** : <https://www.villageproperty.com.au/lease/nsw/sutherland/kirrawee/residential/apartment/8350338>



**Alan Wang**  
1300 62 44 00

[For full version visit the website](https://www.villageproperty.com.au)

<https://www.villageproperty.com.au>



PRICE

PARKING

## South Village *brisbane*

### Building G Key Plan



Level 1-13  
G1.08, G2.08, G3.08, G4.08, G5.08,  
G6.08, G7.05, G8.05, G9.05, G10.05,  
**G11.05, G12.05, G13.05**  
2 BED 2 BATH

TOTAL	88 sqm
INTERNAL AREA	76 sqm
BALCONY AREA	12 sqm

Note: this plan is a guide only and does not constitute an offer or contract. Please note that changes may be made to the development during construction and drawings such as areas, fittings, fixtures etc. may change without notice. All parties should rely on their own investigation to validate this information as it is not guaranteed. No liability will be accepted for any inaccuracy or misstatement.

[www.southvillagespartments.com.au](http://www.southvillagespartments.com.au)  
1800 334 267