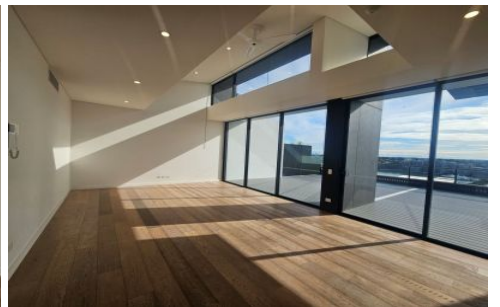
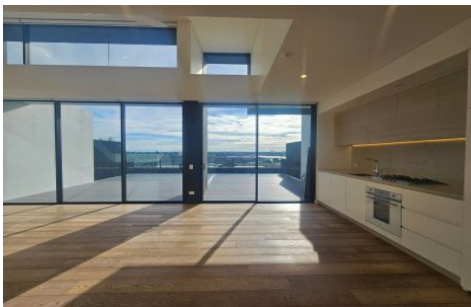





VILLAGE PROPERTY



C311/124 Terry Street Rozelle NSW

2  2  2 

Available 13th June -

Situated within the 'Union Balmain' development, this two bedroom apartment offers terrace style living features spacious light-filled interiors that flow onto a spacious balcony with a sun-filled aspect, taking in district views.

Verdant landscaping, ground-breaking sustainability features and quality finishes. Just minutes' walk to Balmain village, it blends spacious, light-filled interiors with an unprecedented series of lush parks and gardens. At its crown is a breathtaking rooftop park while alfresco cafés and boutique retail spill out at ground level. Very close to the Sydney College of Arts and Birkenhead Point outlet for all your shopping needs. Short commute to the city via car

Type : Apartment

Price : DEPOSIT TAKEN

View : <https://www.villageproperty.com.au/lease/nsw/inner-west/rozelle/residential/apartment/8337918>



Alan Wang
1300 62 44 00

[For full version visit the website](https://www.villageproperty.com.au)

<https://www.villageproperty.com.au>



2 bed+study

- C. 305
- C. 308
- C. 311
- C. 314

- Internal Area: 95m²
- External Area: 44m²
- Total: 139m²

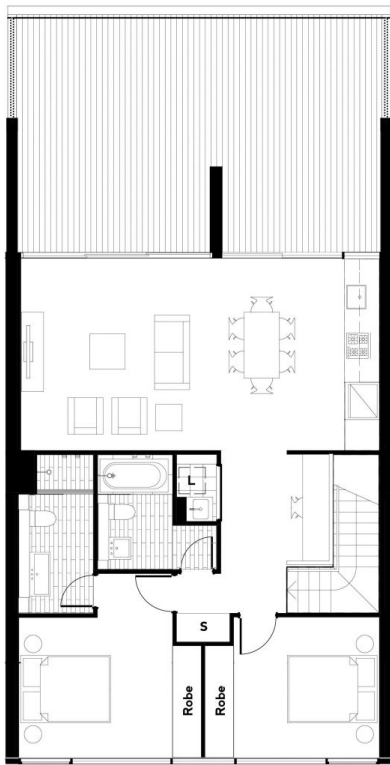
- Parking: 1

- LEGEND
- L Laundry
- S Storage

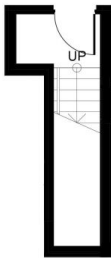


Disclaimer: This layout plan was produced prior to construction and has been prepared for marketing purposes only. The information is believed to be correct but is not guaranteed. Changes may be made during construction and demolition. Areas, fittings and finishes are subject to change in accordance with the contract for sale. The position of furniture and fittings should not be taken to be indicative of final positions of power points, tv connections points and the like prospective purchaser must rely on their contract for sale for the list of inclusions. Builtup for services are not depicted.

unionbalmain.com.au
1800 331 321



Upper Level



Entry Level

