

VILLAGE PROPERTY



1106/2A Elsie Street Burwood NSW

2 2 1

Available from 9th May -

Designed by famous architects Turner, have created an alluring new landmark right in the beating heart of Burwood, on the doorstep of Burwood Park. Capturing glorious predominantly northerly views from the city skyline to the majestic Blue Mountains, this slender, elegant building is a spectacle of glass and light. Encompassing a maximum just five residences per floor, it has a boutique feel.

- Modern kitchen with Smeg appliances including gas stove, dishwasher, oven and rangehood
- Expansive balcony that draw in city/park views and light deep into apartments

Type : Apartment

Price : \$930 Per Week

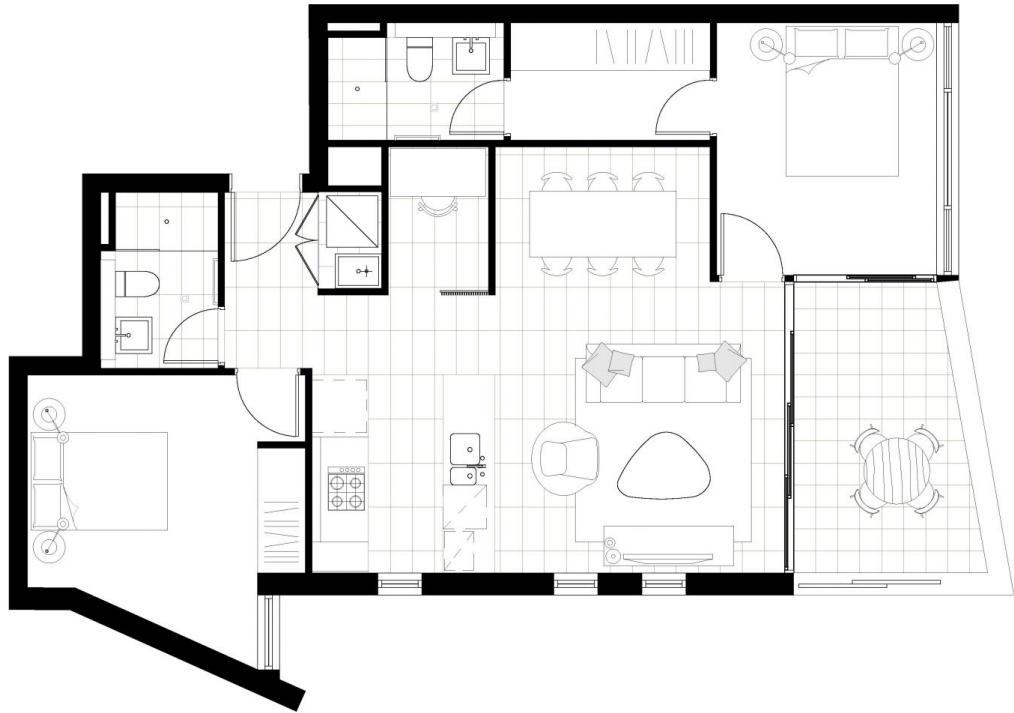
View : <https://www.villageproperty.com.au/lease/nsw/inner-west/burwood/residential/apartment/8335807>



Zhuoqun (Kate) Zhang
1300 62 44 00

[For full version visit the website](https://www.villageproperty.com.au)

<https://www.villageproperty.com.au>



lighthouse
BURWOOD

LEVEL 3 - 13

306, 406, 506, 606, 706, 806,
906, 1006, 1106, 1206, 1306

2 Bedrooms

Internal area (sqm):	75
Balcony area (sqm):	9
Total (sqm):	84



lighthouseburwood.com.au | 1800 137 889

ATLAS
PROPERTY HOLDINGS PTY LTD

CBRE

Disclaimer: 1. These sales and marketing materials are provided only for information. 2. The information is believed to be correct, but is not guaranteed. 3. Changes may be made without notice or consultation with the operators of the contract for sale. 4. The fixtures and fittings depicted are not included with the sale and purchasers must refer to their contracts for sale for the list of inclusions. 5. The position of the furniture and fittings shown are for illustrative purposes only and are not intended to be taken as a guarantee of their position or placement. 6. Prospective purchasers must refer to their contracts for sale for the list of inclusions. 7. All goods including furniture and fittings and the fixtures and fittings are to be provided and are not included in the sale. 8. The above prices are in respect of each unit.