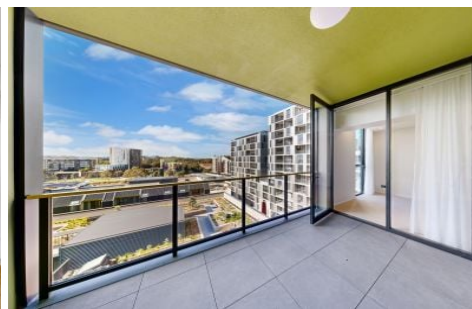
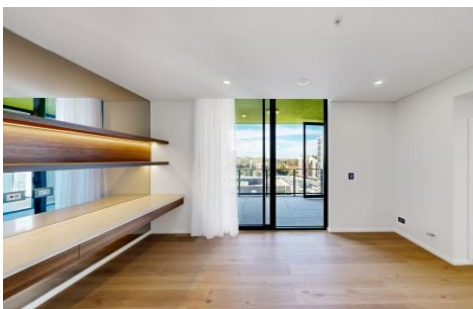


VILLAGE PROPERTY



720/22 George Julius Avenue Zetland NSW

2  2  1 

This beautifully designed split-level penthouse combines comfort, style, and natural light. Set within one of Zetland's most sought-after complexes, it's a haven for buyers seeking a private retreat in the heart of Sydney's vibrant urban hub.

Why You'll Love This Home

? Bright Living Spaces: A skylight and large windows fill the living and kitchen areas with sunlight, creating a warm and welcoming environment.

? Spacious Bedrooms: Two carpeted bedrooms with built-in wardrobes, morning sunlight, and tranquil views provide restful retreats.

? Elegant Open-Plan Design: Timber flooring seamlessly

[For full version visit the website](https://www.villageproperty.com.au)

Type : Apartment
Price : CONTACT AGENT
Building Size : 96 sqm
View : <https://www.villageproperty.com.au/sale/nsw/eastern-suburbs/zetland/residential/apartment/8323476>



Jack Williams
1300 62 44 00

<https://www.villageproperty.com.au>

Unit 720, 22 George Julius Avenue, Zetland, New South Wales

2 Bed 2 Bath 1 Car



GROUND FLOOR

FIRST FLOOR

CAR SPACE/STORAGE CAGE



VILLAGE PROPERTY

All information contained herein is gathered by Little Hinges. Whilst the scanning technology is highly reliable, we cannot guarantee its accuracy and interested parties should rely on their own enquiries.