

# VILLAGE PROPERTY



**1305/1 Marshall Avenue St Leonards NSW**

1 1

Available April 30th

Embassy Tower, just meters from St Leonards station offers the ultimate lifestyle of comfort and convenience. Boasting high end designer finishes including floor to ceiling windows, Miele appliances, elegant bathrooms and kitchens. This is the pinnacle of luxurious living. Stunning one bedroom apartment filled with great natural light.

Features Include:

- One bedroom wrapped in windows
- Good sized open plan living area
- Well appointed bedroom with built-ins
- Ample storage options

**Type** : Apartment

**Price** : \$800 Per Week

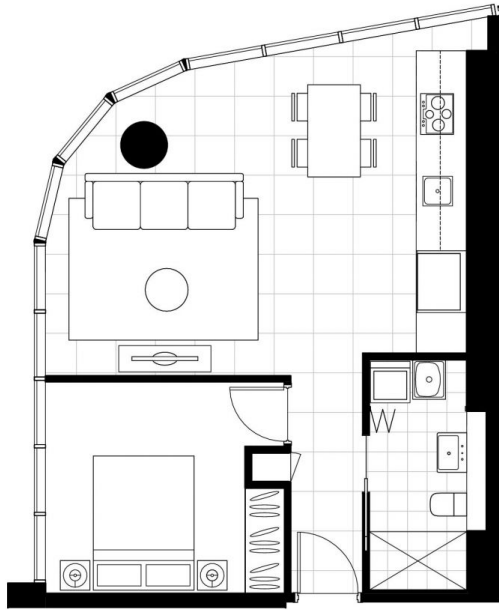
**View** : <https://www.villageproperty.com.au/lease/nsw/north-shore-lower/st-leonards/residential/apartment/8321489>



**Zhuoqun (Kate) Zhang**  
1300 62 44 00

[For full version visit the website](https://www.villageproperty.com.au)

<https://www.villageproperty.com.au>



Disclaimer: Please note that the layout plan was produced prior to construction. The information is believed to be correct but is not guaranteed. Changes may be made during construction and dimensions, areas, fittings, finishes and specification are subject to change without notice in accordance with the provisions of the contract for sale. The furniture and furnishings depicted are not included with any sale and purchasers must refer to their contract for sale for the list of inclusions. The position of the furniture and furnishings should not be taken to be indicative of final positions of power points, tv connection points and the like. Prospective purchasers must rely on their own enquiries. All graphics including the layout and balustrades and the like are indicative only. Balustrades for services are not depicted. The layout plan is at an unspecified scale.

Rev 1



# EMBASSY

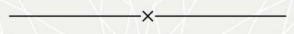
TOWER



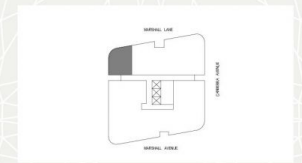
APARTMENTS

**1006, 1106, 1205, 1305,  
1505, 1605, 1705**

1 BEDROOM



INTERNAL	51 m <sup>2</sup>
EXTERNAL	0 m <sup>2</sup>
<b>TOTAL</b>	<b>51 m<sup>2</sup></b>



LEVELS 10-17

[www.embassytower.com.au](http://www.embassytower.com.au)  
**1800 775 911**

LOFTEX **CBRE**