

VILLAGE PROPERTY



3255/65 Tumbalong Boulevard Haymarket NSW

1 1

Available NOW

Positioned high on the 25th floor of the Darling One development, this spacious residence offers ultra-modern living with quality fixtures and fitting throughout.

Type : Apartment

Price : \$1,200 Per Week

View : <https://www.villageproperty.com.au/lease/nsw/sydney-city/haymarket/residential/apartment/8317590>

Max for 2 people only.

- Fantastic unobstructed view spanning from Anzac Bridge to Darling Harbour and CBD skyline
- Bedroom with built-in wardrobes including an oversized study room
- Outstanding interior finishes
- Deluxe kitchen has Miele gas appliances, including fridge
- Zone ducted air-conditioning



Zhuoqun (Kate) Zhang
1300 62 44 00

[For full version visit the website](https://www.villageproperty.com.au)

<https://www.villageproperty.com.au>

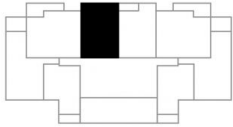
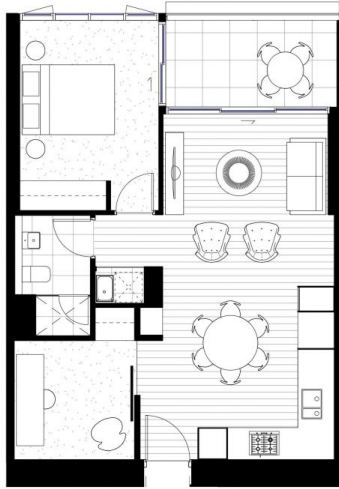
Darling One

SKYHOMES # APARTMENTS

LAYOUT PLAN

apartment type	C
apartment no.	6C, 7C, 8C, 9C, 10C, 11C, 12C, 13C, 14C, 15C, 16C, 17C, 18C, 19C, 20C, 21C, 22C, 23C, 24C, 25C, 26C, 27C, 28C, 29C, 30C
bedrooms	1+S
apartment area	58 m ²
balcony area	7 m ²
total apartment area	65 m ²

This plan is an indicative floor plan only, as at April 2014. This plan is a guide only and does not constitute an offer or a contract and is subject to compliance with all laws and regulatory approval from all relevant authorities. All areas, diagrams, dimensions and specifications shown are approximate only and are subject to survey on completion of construction. All details are subject to change without notice. Prospective purchasers are encouraged to make their own assessments and seek their own professional advice.



DARLING SQ.
SYDNEY


Lend Lease