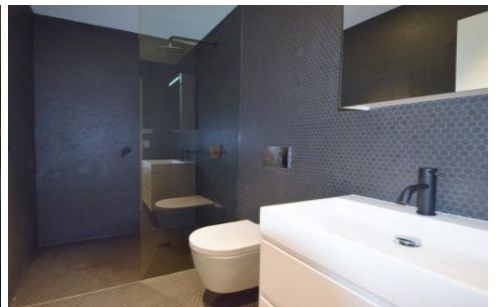
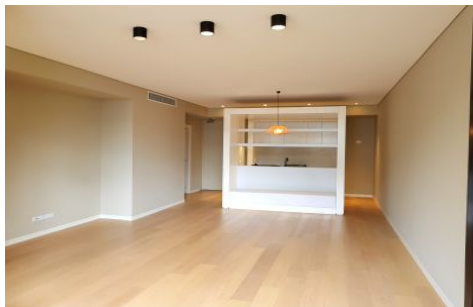


VILLAGE PROPERTY



306/69-81 Foveaux Street Surry Hills NSW

2  2  1 

Available 24th April -

A designer masterpiece in a buzzing urban location, this extraordinary residence defines the epitome of ultra-contemporary elegance. Impeccably appointed with an emphasis on low maintenance luxury, with the convenience of the vibrant Surry Hills cafe scene merely moments away.

Woolworths Metro supermarket footsteps away for your everyday grocery shopping needs. 650m away from the popular Princes Alfred Park that includes tennis courts, basketball courts and Prince Alfred Park Swimming Pool. Abundance of dining options at your door and only a short stroll to CBD, Haymarket, railway and Central Station this a

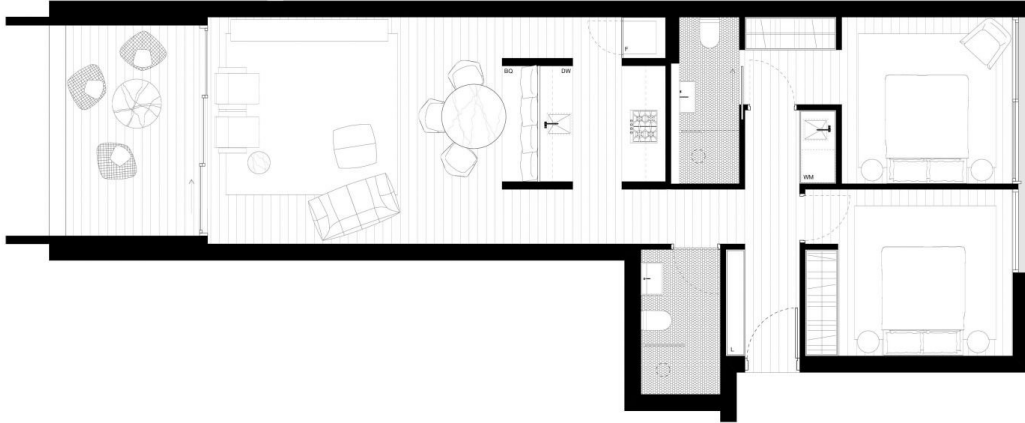
Type : Apartment
Price : DEPOSIT TAKEN
View : <https://www.villageproperty.com.au/lease/nsw/ea-stern-suburbs/surry-hills/residential/apartment/8316370>



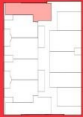
Alan Wang
1300 62 44 00

[For full version visit the website](https://www.villageproperty.com.au)

<https://www.villageproperty.com.au>



FOVEAUX STREET



APT 206, 306 & 406

TWO BEDROOM APARTMENT

Internal Area: 76m² External Area: 12m² Total Area: 88m²

FOVEAUX

APARTMENTS / SURRY HILLS

CBRE

Please note that the floor plan was produced prior to construction. The information herein is believed to be correct but is not guaranteed. Changes may be made during construction and dimensions, area, fittings and specifications are subject to change without notice in accordance with the provisions of the contract for sale. The furniture and furnishings depicted are not included with any sale and purchasers must refer to the contract for sale for the list of inclusions. The position of furniture and furnishings should not be taken to be indicative of final positions of power points, TV connection points and the like. Prospective purchasers must rely on their own enquiries. All graphics including the layout, balustrades and the like are indicative only. Bulkheads for services are not depicted. Floor plan is at an unspecified scale. All area sizes indicated are approximate only and are subject to final survey.