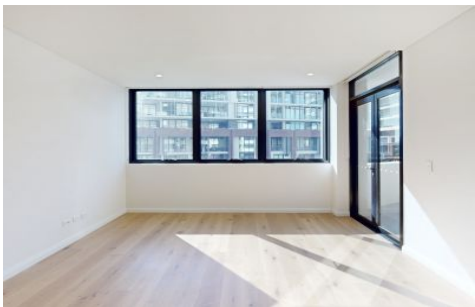


VILLAGE PROPERTY



110/32 Civic Way Rouse Hill NSW

2  2  1 

Available NOW

Located at Tower 6

Positioned just moments from the Rouse Hill Town Centre precinct, Proximity provides you with the perfect location for the ultimate combination of accessibility and lifestyle.

You'll love having beautiful parks and open space right on your doorstep, while being moments from a life of convenience. Set in a highly desirable location with beautiful established trees, serene park-like surrounds and neighbouring heritage buildings. Nature strips connect directly from site to the nearby riding and walking trails, reserves and parks.

Type : Apartment

Price : \$720 Per Week

View : <https://www.villageproperty.com.au/lease/nsw/hills/rouse-hill/residential/apartment/8314469>



Clarice (nikki) Villanueva
1300 20 55 69

[For full version visit the website](https://www.villageproperty.com.au)

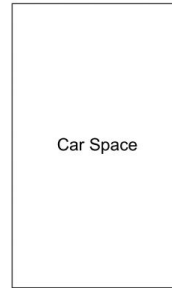
<https://www.villageproperty.com.au>

Unit 110, 32 Civic Way, Rouse Hill

2 Bed 2 Bath 1 Car



FLOOR PLAN



(Not In Position)

CAR SPACE

Internal : 79m²
External : 13m²

