

# VILLAGE PROPERTY



**108/18 Bayswater Road Potts Point NSW**

1 1

Available NOW -

Set in the cosmopolitan hub of Potts Point, this contemporary apartment offers the perfect balance of modern living, style, and convenience. Within the highly regarded The Manor development it's a prime opportunity for those looking to enjoy the best of city living, just steps from all that Potts Point has to offer.

Enjoy a lifestyle surrounded by vibrant cafes, bars, restaurants, and cultural landmarks, all while being moments from the city center and stunning Sydney Harbour. Just a stroll away from the CBD and Sydney's extensive transport network, and moments to Woolloomooloo's dining, Darlinghurst's cafés and

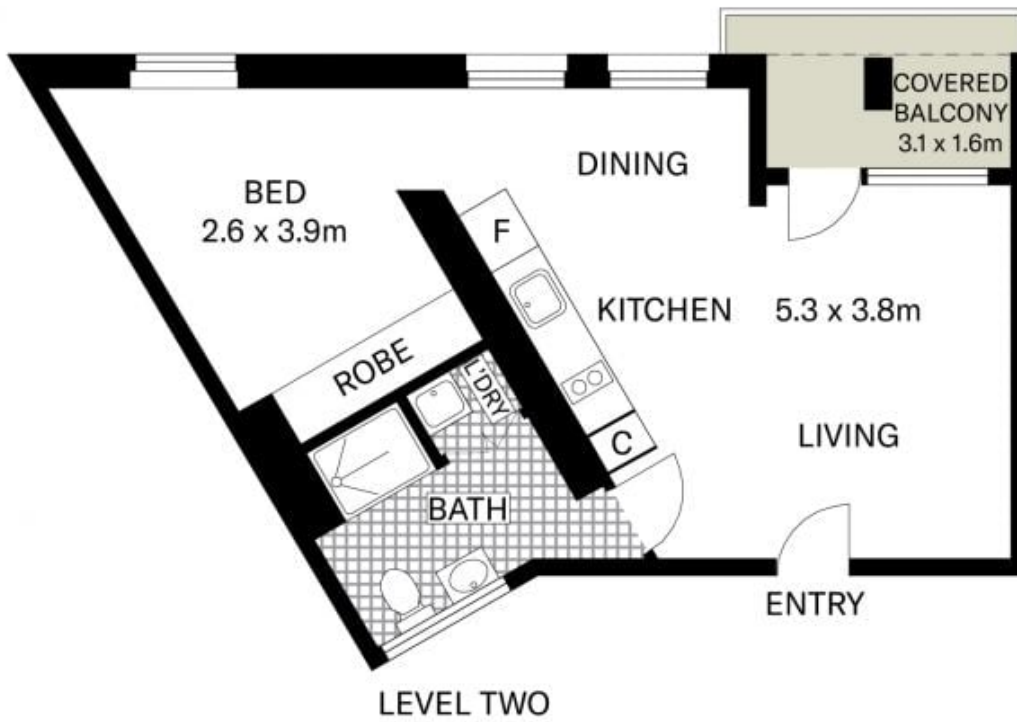
**Type** : Apartment  
**Price** : \$725 Per Week  
**View** : <https://www.villageproperty.com.au/lease/nsw/eastern-suburbs/potts-point/residential/apartment/8305575>



**Alan Wang**  
1300 62 44 00

[For full version visit the website](https://www.villageproperty.com.au)

<https://www.villageproperty.com.au>



All information contained herein is gathered from sources we believe to be reliable.  
We cannot however guarantee its accuracy and parties should and rely on their own requirements.



108/18 Bayswater Road, Potts Point