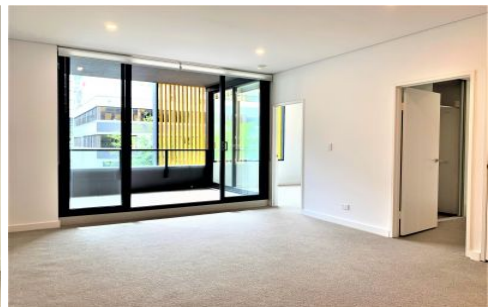


VILLAGE PROPERTY



317A/116 Bowden Street Meadowbank NSW

2  2  1 

Available Now

"Kingston Quarter" Shepherds Bay is the area's newest development offering a waterfront position, luxurious designer finishes and the most convenient access to Meadowbank's surrounds. Resort style grounds create a luxurious waterside playground with Train station, Ferry wharf and local buses all within a short walk.

- Generous bedrooms with built-ins
- Balcony ideal for entertaining
- Great open plan layout
- Reverse cycle air-conditioning
- Secure car space
- Swimming pool and spa

[For full version visit the website](https://www.villageproperty.com.au/lease/nsw/northern-suburbs/meadowbank/residential/apartment/8258979)

Type : Apartment

Price : \$780 Per Week

View : <https://www.villageproperty.com.au/lease/nsw/northern-suburbs/meadowbank/residential/apartment/8258979>



Taneisha Kerr
1300 62 44 00

<https://www.villageproperty.com.au>