

VILLAGE PROPERTY



B304/72 MacDonald Street Erskineville NSW

2  1 

Available NOW

Eve Apartments offers an unbeatable urban lifestyle just short bus ride from the CBD. Walking distance from the train station and centrally located in Erskineville's famous café and restaurant precinct. Be entertained, be indulged and be nourished with the best in dining, shopping and entertainment close by. Woolworths Metro Park Sydney minutes walk away for your everyday shopping needs at your convenience. Local Cafés and eateries within walking distance.

Lease periods are 6-12 months. (12 Months Preferred)
Pets to be considered at landlord's discretion.

Type : Apartment

Price : \$780 Per Week

View : <https://www.villageproperty.com.au/lease/nsw/inner-west/erskineville/residential/apartment/8222586>



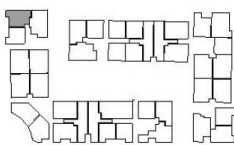
Alan Wang
1300 62 44 00

[For full version visit the website](https://www.villageproperty.com.au)

<https://www.villageproperty.com.au>

EVE

BY Fridcorp.



Macdonald St

APARTMENT B304

Internal 61.6m²
 External 4.5m²
 Total 66.1m²

For more information
 1800 221 336
EveByFridcorp.com.au

Disclaimer: This plan is a guide only and does not constitute an offer or contract. Please note changes may be made during the development and areas, fittings, fixtures and specifications are subject to change without notice in accordance with the terms of the contract of sale. All parties must rely on their own investigation to validate this information as it is not guaranteed. No liability will be accepted for any inaccuracy or misstatement. (E)

**Hecker
Guthrie**



CBRE