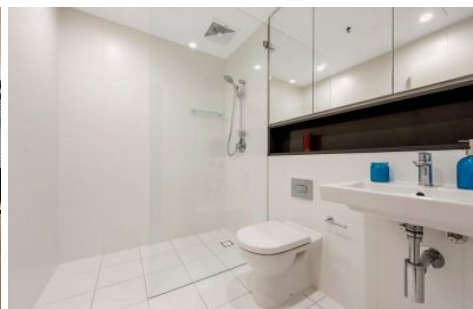
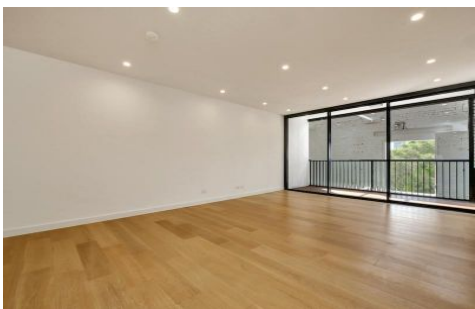


# VILLAGE PROPERTY



**105/280 Jones Street Pyrmont NSW**

Available 8th January -

A spectacular, modern studio apartment offers life style and convenience on Sydney's city fringe. With the coveted northern aspect, this sun drenched apartment is sure to brighten your new home. Galley style kitchen provides efficient use of space that stretches the length of this modern abode, while beautifully appointed wooden floor boards extend out onto your own private balcony.

Harbour Mill is perfectly located for those who desire everything at their doorstep. The site adjoins the Wentworth Park Light Rail Station, which is cleverly linked to central Station and Dulwich Hill via Leichardt, Glebe, Darling Harbour and Haymarket. Residents can enjoy an

1 

**Type** : Studio

**Price** : \$570 Per Week

**View** : <https://www.villageproperty.com.au/lease/nsw/sydney-city/pyrmont/residential/studio/8208856>



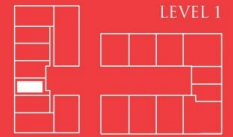
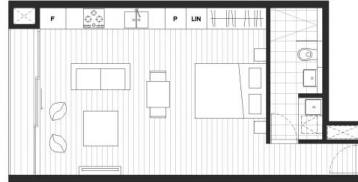
**Alan Wang**  
**1300 62 44 00**

[For full version visit the website](https://www.villageproperty.com.au)

<https://www.villageproperty.com.au>



APARTMENT  
**105**  
STUDIO



INTERNAL	40M <sup>2</sup>
EXTERNAL	3M <sup>2</sup>
TOTAL	43M <sup>2</sup>
CAR	0



**HARBOUR MILL**  
PYRMONT

Disclaimer: The information, images and illustrations are indicative only and are subject to change. IPM Pty Ltd, and related companies and their agents do not warrant the accuracy of the information and images and do not accept any liability for any error or discrepancy. The information and images used may not form part of any Contract for Sale. Interested parties must rely on their own enquiries and the information in the Contract for Sale for the development. All architectural images are computer generated and are artist impressions only.

