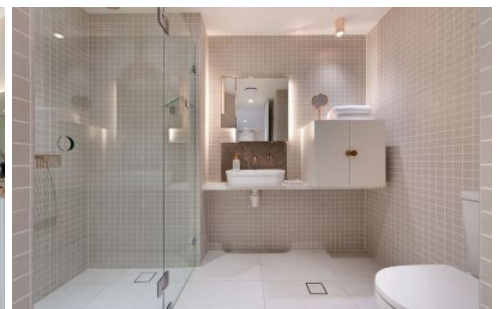


VILLAGE PROPERTY



E504/72 MacDonal Street Erskineville NSW

2  **1** 

Available NOW -

Contemporary masterpiece capturing the essence of Inner City living. Elegantly designed by award-winning DKO Architects with the finest bespoke finishes and neutral tone interiors combining modern style and functionality.

Eve Apartments offers an unbeatable urban lifestyle just 10 minutes from the CBD. Only minutes walk away from the train station and bus routes to the city. Centrally located in Erskineville's famous café and restaurant precinct. Be entertained, be indulged and be nourished with the best in dining, shopping and entertainment close by. Woolworths Metro Park Sydney minutes walk away for your everyday shopping needs at your convenience. Close proximity to

Type : Apartment

Price : \$850 Per Week

View : <https://www.villageproperty.com.au/lease/nsw/inner-west/erskineville/residential/apartment/820581>
1



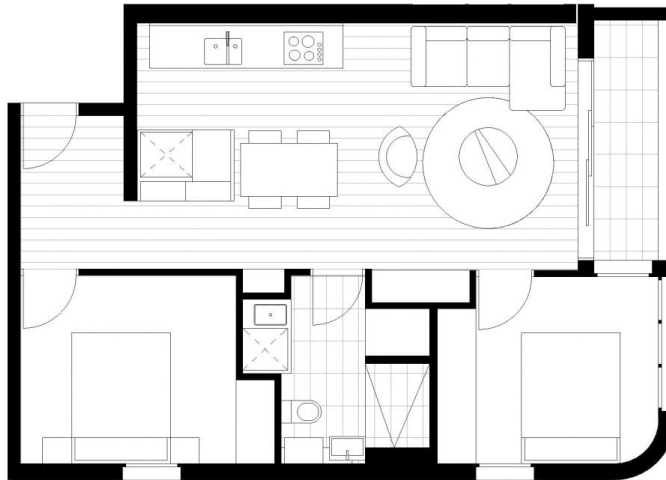
Alan Wang
1300 62 44 00

[For full version visit the website](https://www.villageproperty.com.au)

<https://www.villageproperty.com.au>

EVE

BY Fridcorp™



Macdonald St

APARTMENT E504

Internal 59.9 m²
 External 3.7 m²
 Total 63.6 m²

For more information
 1800 221 336
EveByFridcorp.com.au

Disclaimer: This plan is a guide only and does not constitute an offer or contract. Please note changes may be made during the development and access, fittings, fixtures and specifications are subject to change without notice in accordance with the terms of the contract of sale. All parties must rely on their own investigation to validate this information as it is not guaranteed. No liability will be accepted for any inaccuracy or misstatement. (B)

**Hecker
Guthrie**



CBRE