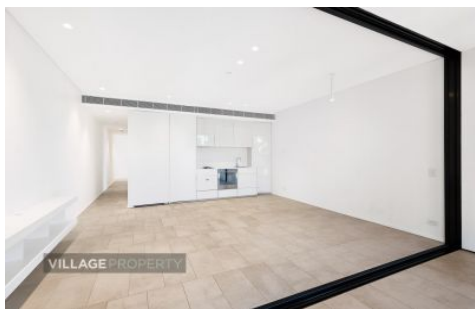


VILLAGE PROPERTY



311/8 Central Park Avenue Chippendale NSW

2  1  1 

Available NOW -

Designed by world-class architects, Central Park is located just a step away from Central station and Sydney's Creative and education precincts. Highly convenient with shopping, dining and entertainment right within Central Park. Conveniently positioned only minutes to Chinatown, Sydney CBD, Central Station, cafes, restaurants and much more.

Lease period 6-12 months. No pets.

Features:

- Smart floor plan with tiled flooring in living area
- Spacious master carpet bedroom with built-in wardrobes

[For full version visit the website](https://www.villageproperty.com.au)

Type : Apartment

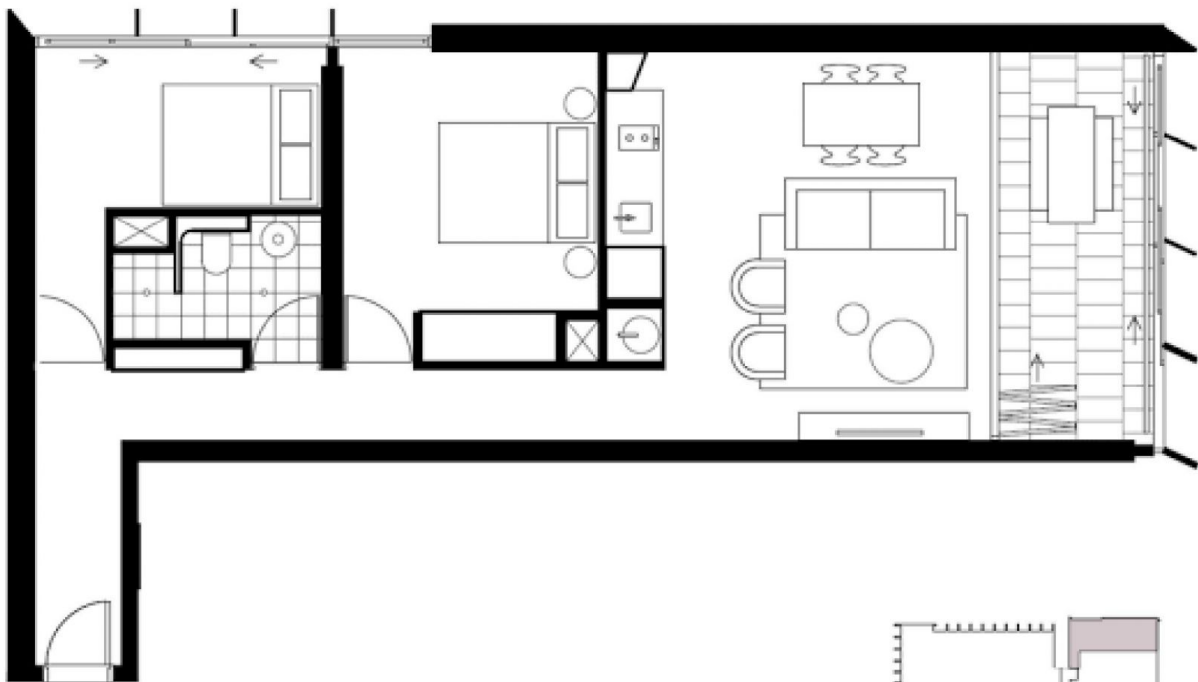
Price : \$1100 Per Week

View : <https://www.villageproperty.com.au/lease/nsw/sydney-city/chippendale/residential/apartment/8154642>



Alan Wang
1300 62 44 00

<https://www.villageproperty.com.au>



One Bed | One Bath | One Study
Internal 63 sqm
Loggia 9 sqm
Total 72 sqm

