

VILLAGE PROPERTY



5205/6 Grove Street Dulwich Hill NSW

1  1  1 

Available 1st November -

Regarded with high quality finishes and its smart floor plan, this modern development will meet all your needs. Fantastically located; one minute walk to Arlington Light Rail stop - be in Sydney's CBD in 30 minutes, moments to Johnson Park and Arlington Recreation Reserve and close to vibrant village hubs of Dulwich Hill and Marrickville. You are just a Moments stroll to Johnson Park and Arlington Recreation Reserve and the iconic Sideways Deli Cafe. Located in the inner city hubs of Dulwich Hill and Marrickville, Arlington Grove is at the heart of a new approach to urban style.

Lease periods are 6-12 months. No pets.

[For full version visit the website](https://www.villageproperty.com.au/lease/nsw/inner-west/dulwich-hill/residential/apartment/8139590)

Type : Apartment
Price : \$650 Per Week
View : <https://www.villageproperty.com.au/lease/nsw/inner-west/dulwich-hill/residential/apartment/8139590>



Alan Wang
1300 62 44 00

<https://www.villageproperty.com.au>

Arlington
Grove Dulwich Hill

VERNA
apartments

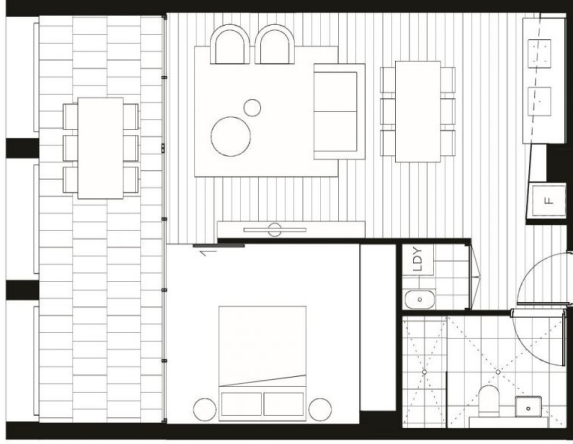
ONE BEDROOM
APARTMENT

5205

INTERNAL AREA: 52m²
EXTERNAL AREA: 16m²
TOTAL: 68m²

ARLINGTONGROVE.COM.AU
1800 881 221

galileo **CBRE**



All areas shown are draft and subject to survey. All apartments subject to contract and availability. Images showing the building, interiors and views are computer generated prior to construction and indicative only. Dimensions, layouts, finishes and specifications are subject to change and may differ from those shown. Views shown are between apartments. Ground floor retail not yet confirmed. Furniture and plantings are for decorative purposes and are not included.
01/05/2015