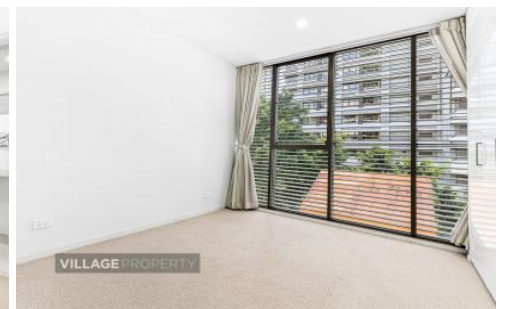


VILLAGE PROPERTY



601/11 Alberta Street Sydney NSW

2 2 1

Available from 23rd September -

Located in the heart of Sydney City, encompassing quality and convenience, the ASPIRE apartments provides a haven for those who enjoy the vibrant hub of culture, commerce and entertainment of Sydney's CBD.

Type : Apartment

Price : \$1,050 Per Week

View : <https://www.villageproperty.com.au/lease/nsw/sydney-city/sydney/residential/apartment/8116972>

Features include:

- Wide timber floorboards
- Stone bench tops, Aribiscato Marble to kitchen and bathrooms
- Richly textured timber veneer joinery
- State of the art Smeg appliances.
- Security lift access



Zhuoqun (Kate) Zhang
1300 62 44 00

[For full version visit the website](https://www.villageproperty.com.au)

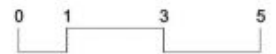
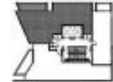
<https://www.villageproperty.com.au>

LEVEL 6 - 15

APARTMENTS
601, 701, 801, 901,
1001, 1101, 1201,
1301, 1401 & 1501

2 BEDROOM

Internal area	86m ²
External area	8m ²
Total area	94m²



Disclaimer: This document was produced prior to commencement of construction. None of the information contained in this document should be relied on or construed as advice, a recommendation or an offer for the sale of property. The developer, its agencies and related entities do not make any representations or give any warranties that the information set out in this document is or will remain accurate or complete at all times and they disclaim all liability for harm, loss, costs, or damage which arises in connection with any use or reliance on the information. Changes may be made during the development and any dimensions, finishes and specifications are subject to change without notice. QTCA

CALL 8969 8500
www.aspiresydney.com.au

CBRE