

# VILLAGE PROPERTY



19/213 Princes Highway Arncliffe NSW

1 1 1

Unmatched in refinement, the new Bloom apartments are some of the most exquisite residences soon to be available. Superbly located, these beautiful apartments are a unique opportunity to experience quintessential living in an urban lifestyle.

Take advantage of this limited opportunity to live in a highly desirable location.

Features include:

- Well-proportioned open plan design
- Large Bedroom with built in robe
- Chic kitchen layout with top of the range Delonghi appliances
- Ducted air con

**Type** : Apartment

**Price** : SOLD X TYLER TAYLOR

**View** : <https://www.villageproperty.com.au/sale/nsw/st-george/arncliffe/residential/apartment/8099443>

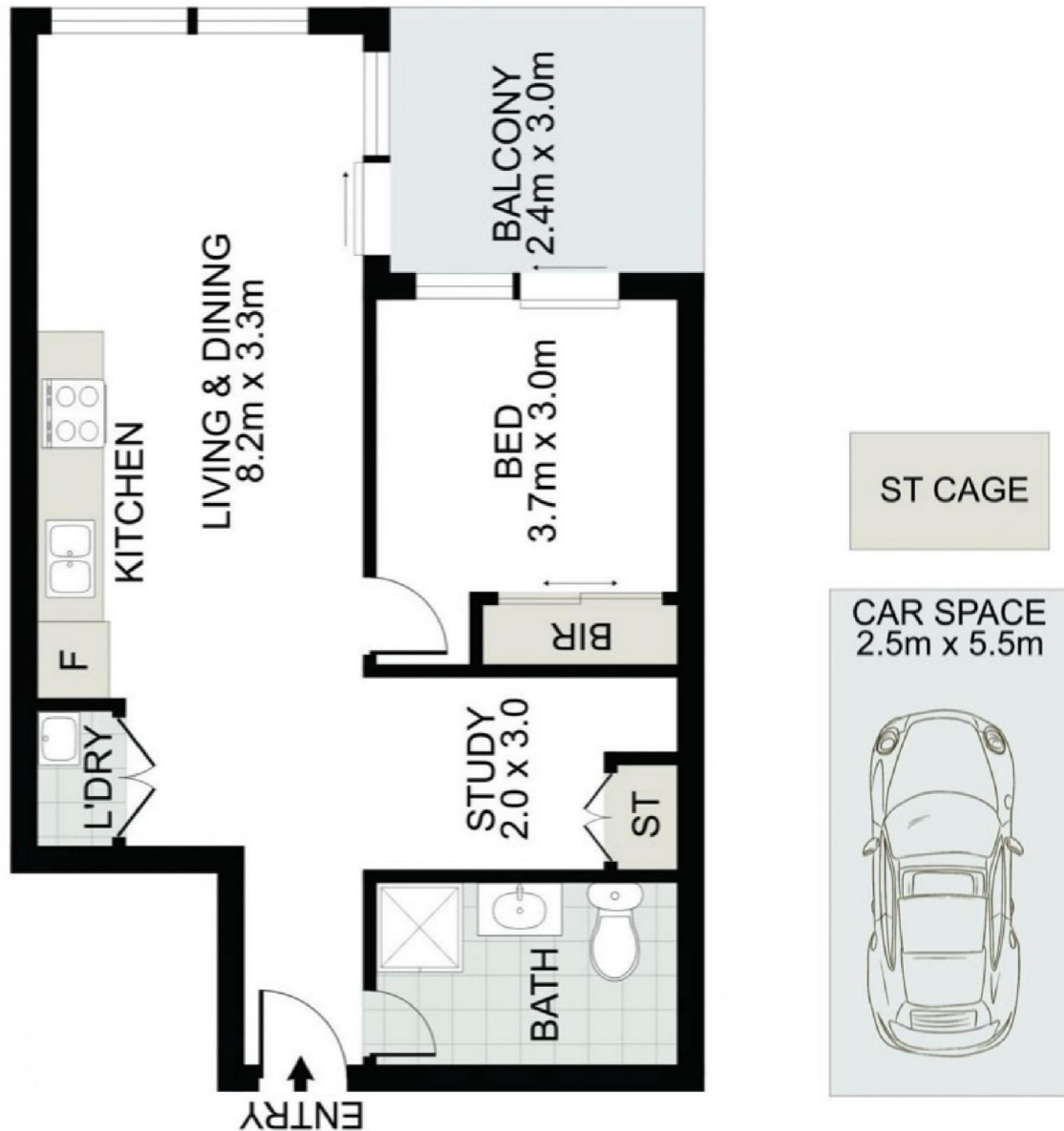


**Tyler Taylor**  
1300 62 44 00

[For full version visit the website](https://www.villageproperty.com.au)

<https://www.villageproperty.com.au>

# VILLAGE PROPERTY



19/213 Princes Highway Arncliffe

DISCLAIMER: PLANS SHOWN ARE FOR PRESENTATION PURPOSES AND ARE NOT PART OF ANY LEGAL DOCUMENT. ALL MEASUREMENTS AND FIGURES ARE APPROXIMATE.