

VILLAGE PROPERTY



148/213 Princes Highway Arncliffe NSW

1 1 1

Unmatched in refinement, this near new Bloom apartment is one of the most exquisite residences.

Superbly located, this beautiful apartment is a unique opportunity to experience quintessential living in an urban lifestyle.

Features include:

- * Well-proportioned open plan living
- * Large Bedroom with built in wardrobe
- * Chic kitchen layout with top of the range Delonghi appliances

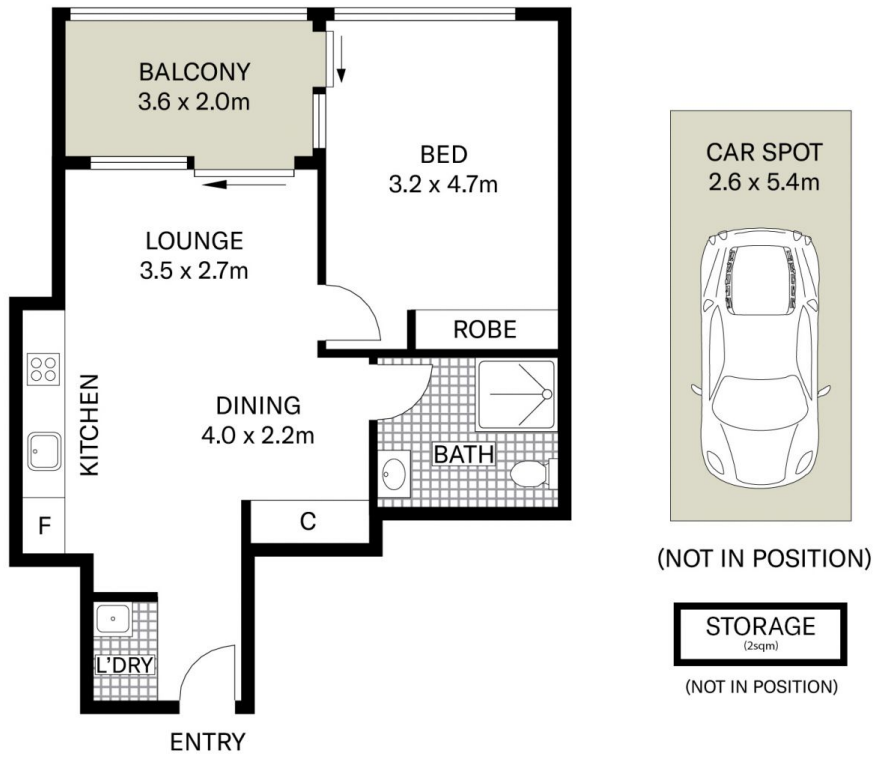
[For full version visit the website](https://www.villageproperty.com.au)

Type : Apartment
Price : SOLD X TYLER TAYLOR
Land Size : 72 sqm
View : <https://www.villageproperty.com.au/sale/with-st-george/arncliffe/residential/apartment/8091053>



Tyler Taylor
1300 62 44 00

<https://www.villageproperty.com.au>



All information contained herein is gathered from sources we believe to be reliable.
We cannot however guarantee its accuracy and parties should and rely on their own requirements.



148/213 Princes Highway, Arncliffe

VILLAGE
PROPERTY