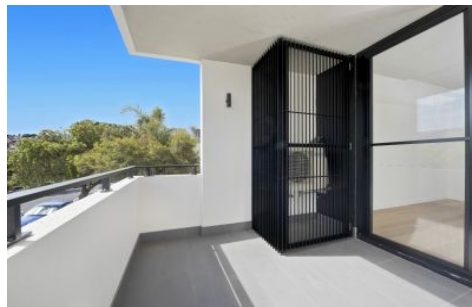


# VILLAGE PROPERTY



110/63-85 Victoria Street Beaconsfield NSW

2  2  1 

Available 13th September

The Treehouse is a boutique residential complex in Beaconsfield and part of the greater redevelopment of the Green Square precinct. It has been designed as an urban oasis for inner city living. Within walking distance to Green Square Station, cafe's, restaurants, parks and buses. One Stop train ride from Green Square to Central Station. Short drive to Green Square Woolworths for your grocery shopping.

Lease period minimum 12 months. No pets.

Features:

[For full version visit the website](https://www.villageproperty.com.au/lease/nsw/inner-west/beaconsfield/residential/apartment/8087289)

**Type** : Apartment

**Price** : \$970 Per Week

**View** : <https://www.villageproperty.com.au/lease/nsw/inner-west/beaconsfield/residential/apartment/8087289>



**Alan Wang**  
1300 62 44 00

<https://www.villageproperty.com.au>

