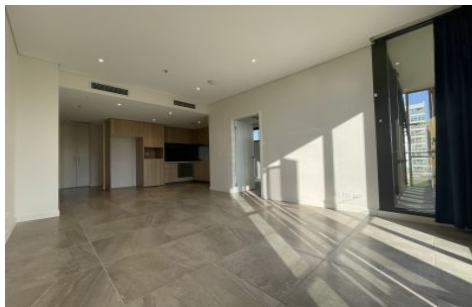


VILLAGE PROPERTY



1008/188 Day Street Sydney NSW

2  2 

Available NOW

Price : \$1,050 Per Week

View : <https://www.villageproperty.com.au/lease/nsw/sydney-city/sydney/residential/apartment/8084551>

Proudly set high above the eastern edge of the revitalised Darling Harbour lifestyle precinct, 'Radiance' is a landmark of contemporary inner city living. This stunning residence will be the epitome of effortless low maintenance quality and timeless sophistication.

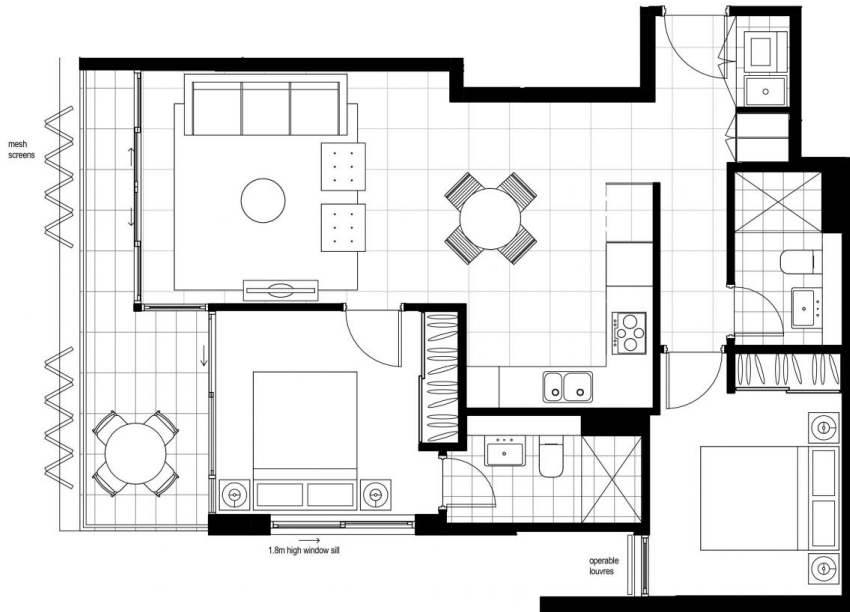
- Well configured with invitingly spacious modern interiors
- Generous open plan entertaining areas
- Double bedrooms with built in robes
- Designer kitchen has gas appliances
- Security intercom and a European laundry
- One storage cage in basement
- Simply a stroll to Haymarket culture, transport and cafes

Lease periods are 6-12 months.



Zhuoqun (Kate) Zhang
1300 62 44 00

<https://www.villageproperty.com.au>



Disclaimer: Please note that the layout plan was produced prior to construction. The information is believed to be correct but is not guaranteed. Changes may be made during construction and dimensions, area, fittings, finishes and specification are subject to change without notice in accordance with the provisions of the contract for sale. The furniture and furnishings depicted are not included with any sale and purchasers must refer to their contract for sale for the list of inclusions. The position of the furniture and furnishings should not be taken to be indicative of final positions of power points, tv connection points and the like. Prospective purchasers must rely on their own enquiries. All graphics including the layout and balustrades and the like are indicative only. Bulkheads for services are not depicted. The layout plan is at an unspecified scale Rev 0.



RADIANCE
DARLING HARBOUR

2 BEDROOMS

LEVEL 7-16

APARTMENT
708, 808, 908, 1008,
1108, 1208, 1308,
1508, 1608

INTERNAL
67 m²

BALCONY
8 m²

TOTAL
75 m²

1800 776 105
radianceapartments.com.au

LOFTEX CBRE