

# VILLAGE PROPERTY



609/80 Alfred Street Milsons Point NSW

2 2 1

Available Now

Stunning and prestigious, this architecturally designed harbour residence is sure to impress. Inside, well proportioned interiors are bathed in natural sunshine, while your alluringly large living room leading you through to your own external balcony.

Features include:

- Large bedrooms with built-in wardrobe
- Modern bathrooms with good storage
- Quality floating timber floorboards throughout
- Gourmet kitchen with stone bench top, mirrored splash back & premium Miele appliances

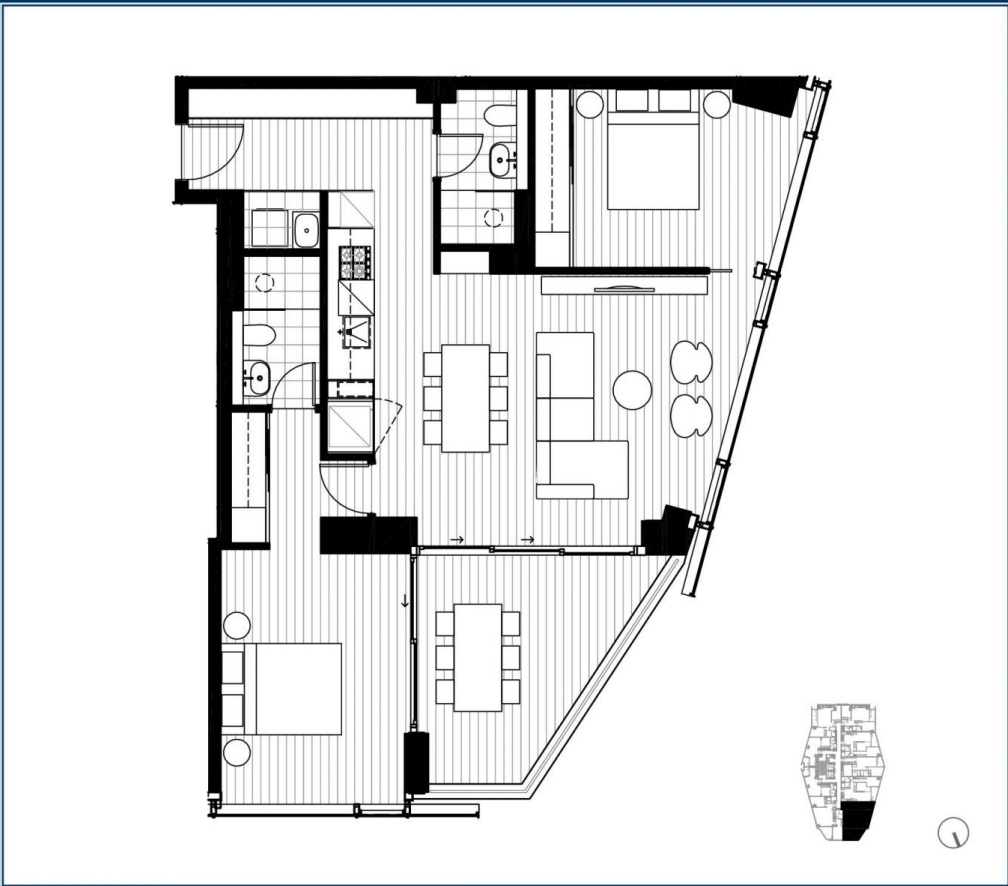
[For full version visit the website](https://www.villageproperty.com.au/lease/nsw/north-shore-lower/milsons-point/residential/apartment/8081725)

**Type** : Apartment  
**Price** : \$1190 Per Week  
**View** : <https://www.villageproperty.com.au/lease/nsw/north-shore-lower/milsons-point/residential/apartment/8081725>



**Taneisha Kerr**  
1300 62 44 00

<https://www.villageproperty.com.au>



**BRIDGEHILL**  
RESIDENCES  
MILSONS POINT

## 2 BEDROOM

509, 609, 709, 809, 908,  
1008, 1108, 1208, 1308,  
1508, 1608

INTERNAL AREA: 81m<sup>2</sup>

EXTERNAL AREA: 11m<sup>2</sup>

TOTAL: 92m<sup>2</sup>



[bridgehillresidences.com.au](http://bridgehillresidences.com.au)  
1800 307 177

Disclaimer: This layout plan was produced prior to construction and has been prepared for marketing purposes only. The information is believed to be correct but is not guaranteed. Changes may be made during construction and dimensions, area, fittings and fixtures are subject to change in accordance with the contract for sale. The position of furniture and fittings should not be taken to be indicative of final positions of power points, tv connections points and the like. Prospective purchasers must rely on their contract for sale for the list of inclusions. Bulkheads for services are not depicted.



**CBRE**