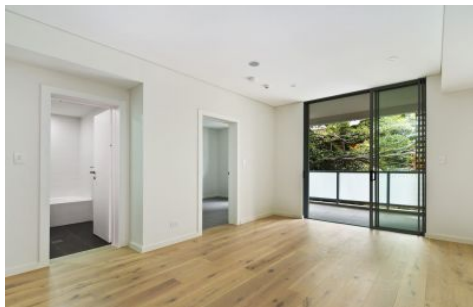


VILLAGE PROPERTY



207/47-51 Lilyfield Road Rozelle NSW

1  1 

Available NOW

This spacious one bedroom apartment is positioned centrally in Rozelle in the 'Easton' Development. Located close to the Lilyfield light rail transport. Only minutes from Rozelle Village and moments from Rozelle Bay. Woolworths Rozelle supermarket short 6 minutes drive for your everyday grocery needs and short easy commute to the CBD. Private & secure position with spacious open plan living that flows seamlessly onto a large north facing balcony.

Type : Apartment

Price : \$670 Per Week

View : <https://www.villageproperty.com.au/lease/nsw/inner-west/rozelle/residential/apartment/8078776>



Alan Wang
1300 62 44 00

Features:

- Spacious living area flowing onto large entertainer's

[For full version visit the website](https://www.villageproperty.com.au)

<https://www.villageproperty.com.au>

