

VILLAGE PROPERTY



2309/6 Grove Street Dulwich Hill NSW

1  1  1 

Available NOW

This highly regarded apartment, located in the near new Arlington Grove development will meet all your needs with its smart floor plan and high quality finishes throughout. Fantastically located; one minute walk to Arlington Light Rail stop - be in Sydney's CBD in 30 minutes, moments to Johnson Park and Arlington Recreation Reserve and close to vibrant village hubs of Dulwich Hill and Marrickville. You are just a Moments stroll to Johnson Park and Arlington Recreation Reserve and the iconic Sideways Deli Cafe. Located in the inner city hubs of Dulwich Hill and Marrickville, Arlington Grove is at the heart of a new approach to urban style.

[For full version visit the website](https://www.villageproperty.com.au/lease/nsw/inner-west/dulwich-hill/residential/apartment/8053634)

Type : Apartment

Price : \$620 per week

View : <https://www.villageproperty.com.au/lease/nsw/inner-west/dulwich-hill/residential/apartment/8053634>



Alan Wang
1300 62 44 00

<https://www.villageproperty.com.au>

Arlington
Grove *Dulwich Hill*

VALENCIA
apartments

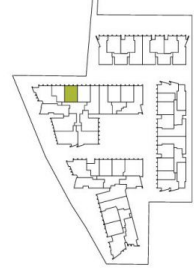
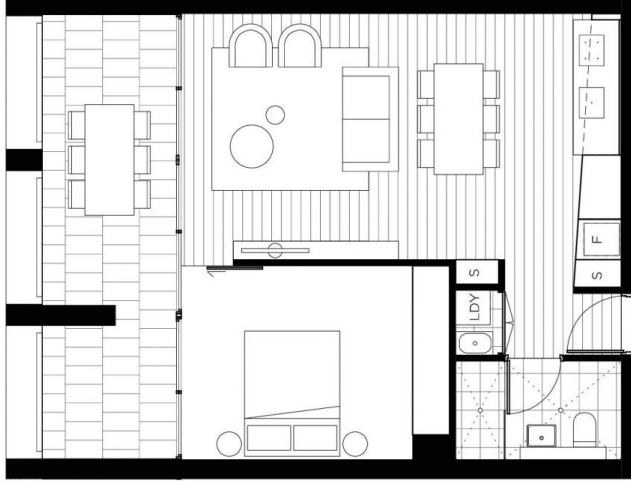
ONE BEDROOM
APARTMENT

2209

INTERNAL AREA: 52m²
EXTERNAL AREA: 15m²
TOTAL: 67m²

ARLINGTONGROVE.COM.AU
1800 881 221

galileo **CBRE**



All areas shown are draft and subject to survey. All apartments subject to contract and availability. Images showing the building, interiors and views are computer generated prior to construction and indicative only. Dimensions, layouts, finishes and specifications are subject to change and may differ from those shown. Views differ between apartments. Ground floor retail not yet confirmed. Furniture and plantings are for decorative purposes and are not included.
01.05.2015