

VILLAGE PROPERTY



508/6 Mooltan Avenue Macquarie Park NSW

2  2  1 

Light, quality, and convenience harmonise in this designer apartment, offering a sensational home with exceptional lifestyle advantages. Quietly nestled in the heart of "Macquarie Park Village," this prestigious two-bedroom apartment presents an opportunity for both investors and first-time buyers. With easy transport connectivity via Macquarie Park Train Station just a 5-minute walk away, and a short stroll to the Macquarie Centre for an array of amenities and shopping, this location promises both community and convenience.

- A prime corner position and a light filled aspect
- Crisp and fresh design with open plan living and dining areas
- A wide wraparound terrace that captures area views

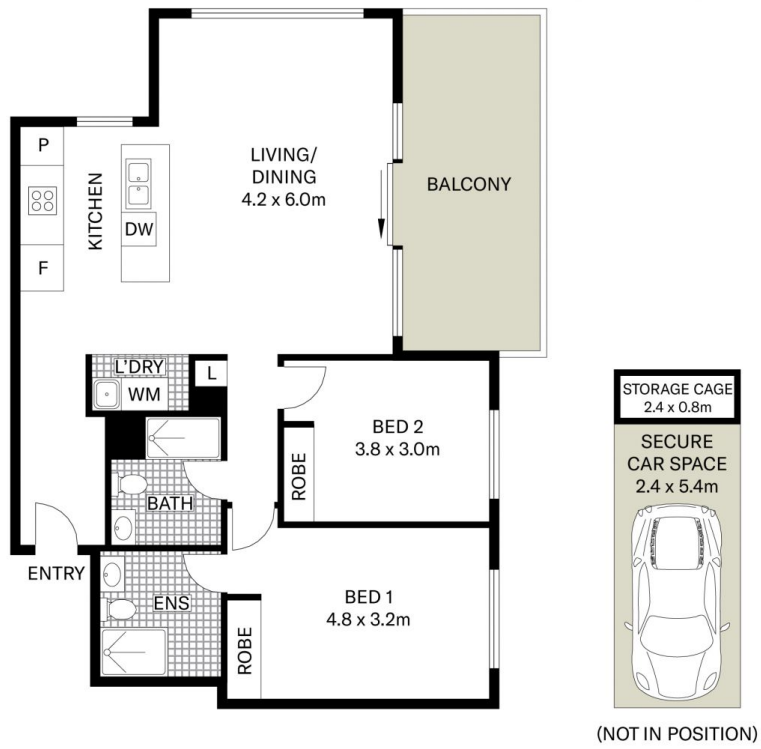
[For full version visit the website](https://www.villageproperty.com.au)

Type : Apartment
Price : SOLD x TOM JONES
View : <https://www.villageproperty.com.au/sale/nsw/northern-suburbs/macquarie-park/residential/apartment/8049143>



Thomas (Tom) Jones
1300 62 44 00

<https://www.villageproperty.com.au>



All information contained herein is gathered from sources we believe to be reliable. We cannot however guarantee its accuracy and parties should and rely on their own requirements.



508/6 Mooltan Avenue, Macquarie Park

VILLAGE
PROPERTY