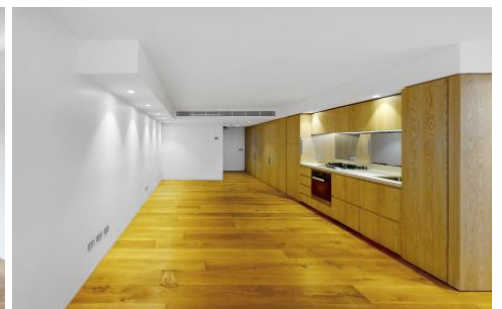
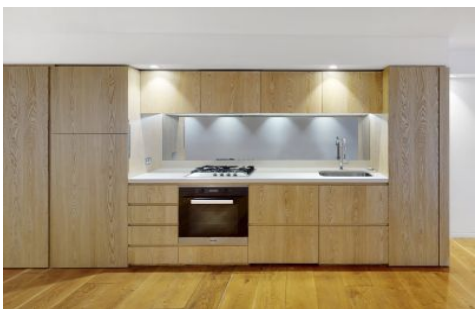


# VILLAGE PROPERTY



**220/180 Campbell Parade Bondi Beach NSW**

1  1 

Available 2nd July

Ultimate luxury lifestyle perfectly located only metres to the famous Bondi Beach and surrounded by abundance of popular cafes, restaurants and shops. Steps to the sand and surf, scenic coastal walk for your leisure. This stunning modern studio offers the highest quality of finishes combined with a famous center beachfront location.

Pacific Bondi offers unsurpassed living with Woolworths supermarket shopping at your doorstep, eateries and gym footsteps away for the ultimate lifestyle all at your convenience. Bus route options to the city and Bondi Junction precinct for ease of travel.

**Type** : Apartment

**Price** : \$750 Per Week DEPOSIT TAKEN

**View** : <https://www.villageproperty.com.au/lease/nsw/eastern-suburbs/bondi-beach/residential/apartment/8039898>



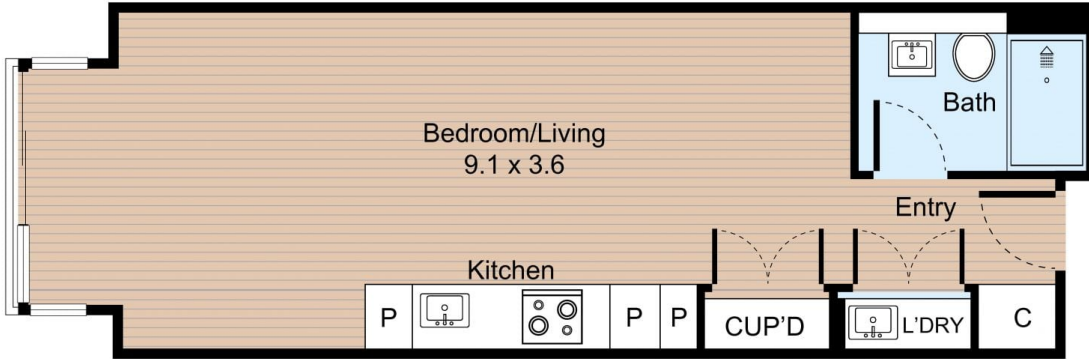
**Alan Wang**  
1300 62 44 00

[For full version visit the website](https://www.villageproperty.com.au)

<https://www.villageproperty.com.au>

# Unit 220, 180 Campbell Parade, Bondi Beach

1 Bed 1 Bath



Internal : 41m<sup>2</sup>



FLOOR PLAN

VILLAGE PROPERTY

All information contained herein is gathered by Little Hinges. Whilst the scanning technology is highly reliable, we cannot guarantee its accuracy and interested parties should rely on their own enquiries.