

VILLAGE PROPERTY



A216/120 Terry Street Rozelle NSW

1 1 1

Available 26th June

Presented in the contemporary 'Union' building, this amazing one bedroom apartment plus study offers lifestyle and convenience in the beautiful inner city suburb of Sydney. Verdant landscaping, ground-breaking sustainability features and quality finishes. Just minutes' walk to Balmain village, it blends spacious, light-filled interiors with an unprecedented series of lush parks and gardens. At its crown is a breathtaking rooftop park while alfresco cafés and boutique retail spill out at ground level. Very close to the Sydney College of Arts and Birkenhead Point outlet for all your shopping needs. Short commute to the city via car or bus route options available nearby at your convenience for ease of travel.

Type : Apartment

Price : \$780 Per Week DEPOSIT TAKEN

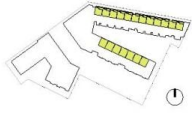
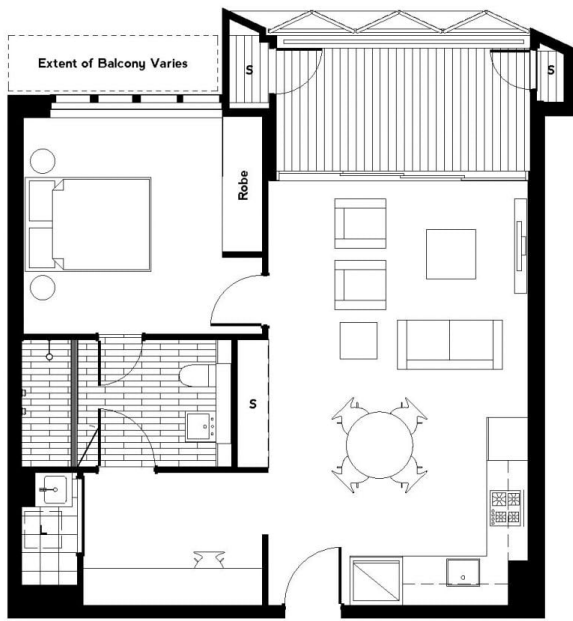
View : <https://www.villageproperty.com.au/lease/nsw/inner-west/rozelle/residential/apartment/8027189>



Alan Wang
1300 62 44 00

[For full version visit the website](https://www.villageproperty.com.au)

<https://www.villageproperty.com.au>



1 bed + study

A. 2.03	A. 2.19	B. 2.08
A. 2.04	A. 2.22	B. 2.10
A. 2.05	A. 2.25	B. 2.11
A. 2.08	A. 2.28	B. 2.13
A. 2.11	A. 3.02	B. 2.15
A. 2.14	A. 3.05	B. 3.04
A. 2.15	B. 2.04	B. 3.06
A. 2.16	B. 2.06	B. 3.08

- Internal Area: 60m²
- External Area: 10-18m²
- Total: 70-78m²
- Parking: 1

- LEGEND
- L Laundry
 - S Storage



Disclaimer: This layout plan was produced prior to construction and has been prepared for marketing purposes only. The information is believed to be correct but is not guaranteed. Changes may be made during construction and demolition. Measurements and details are subject to change in accordance with the contract for sale. The position of fixtures and fittings should not be taken to be indicative of final positions of power points, connections points, and the like. Prospective purchaser must rely on their contract for sale for the list of inclusions. Builders for services are not depicted.

unionbalmain.com.au
1800 331 321