

VILLAGE PROPERTY



A407/5 Hadfields Street Erskineville NSW

1  1 

DEPOSIT TAKEN

Offered in the 'One A' development in a prime position, this modern residence is executively finished throughout perfect place to call your new home. Short walk to Erskineville and St Peters Train Station, 3 km to CBD.

Ideally situated, you are only moments from the vibrant Enmore and Newtown entertainment precinct, the lush greenery of Sydney Park. Abundance of cafes and restaurants for all your indulgences. Woolworths Metro Park Sydney minutes walk away for your everyday shopping needs at your convenience.

Lease periods are 6-12 months. Pets at landlord's

[For full version visit the website](https://www.villageproperty.com.au)

Type : Apartment

Price : \$720 Per Week DEPOSIT TAKEN

View : <https://www.villageproperty.com.au/lease/nsw/inner-west/erskineville/residential/apartment/8025748>



Alan Wang
1300 62 44 00

<https://www.villageproperty.com.au>



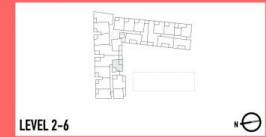
Disclaimer: The particulars are set out as a general outline for the guidance of intending purchasers and do not constitute an offer or contract. All descriptions, dimensions, references to conditions and necessary permutations for use and others details are given in good faith and are believed to be correct, but any intending purchasers should not rely on them as statements or representations of fact, but must satisfy themselves by inspection or otherwise to the correctness of each item, and where necessary seek advice. No third party supplier or their agents has any authority to make or give any representations or warranty in relation to this property.

ONEA

**APT A207, A307, A407,
A507, A607**

Studio + Media

INTERNAL	43m²
EXTERNAL	9m²
TOTAL	52m²



LEVEL 2-6



1800 669 957
ONEALIVING.COM.AU

CBRE

